

illuxo[®]

This unique hinge-light system brings life and lifestyle into every furniture.

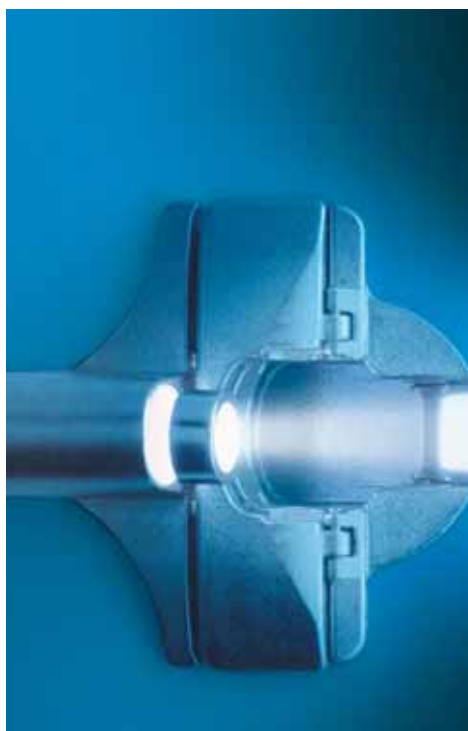


illuxo[®]

Light the motion.

MEPLA  ALFIT
Feel the motion !

Light the motion.
Every movement will become a parade of light with illuxo®.



Pleasure and sense have perhaps never come so close. illuxo® not only offers functional light design but also a unique experience.

Opening a door with illuxo® is like drawing back the stage curtain at a concert. The cones of light cast by illuxo® move like the stage spotlights of your very own performance, producing unparalleled light effects.

Whether in kitchen, bathroom or living area, light has long since become an integral part of modern furniture; it touches your senses and appeals to your feelings. Light brings furniture to life.

The new illuxo® hinge-light system adds a fascinating facet to your imagination: illuxo® offers light design with moving light.

Energy-saving LEDs follow the motion of the door and make every opening and closing movement a parade of light.

**Whichever door you open:
illuxo® changes the interior of every
furniture into a delightful event.**

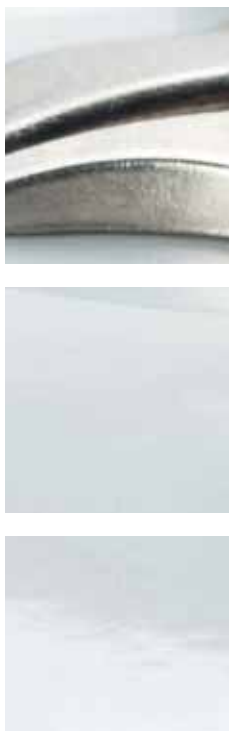
illuxo®

illuxo® combines functionality and elegance
to make a unique light system, that turns every
movement into an experience for the senses.
You have to believe your eyes.

illuxo®



A harmonious combination of design and technology.
Where an illuxo® experience is hard to resist.



The design and function of illuxo® adapted to the hinges CST TWIN NT and CS Click-on series are a perfect harmony.

Illuxo® not only looks elegant, it is also easy to use. The hinge-light system can be quickly and securely combined with the hinges of the CST Twin NT and CS Click-on series without the need for tools.

Practically:

illuxo® can be fitted immediately or at a later date. Battery-powered, without the need for wiring and with integrated switch, your application options are virtually unlimited.

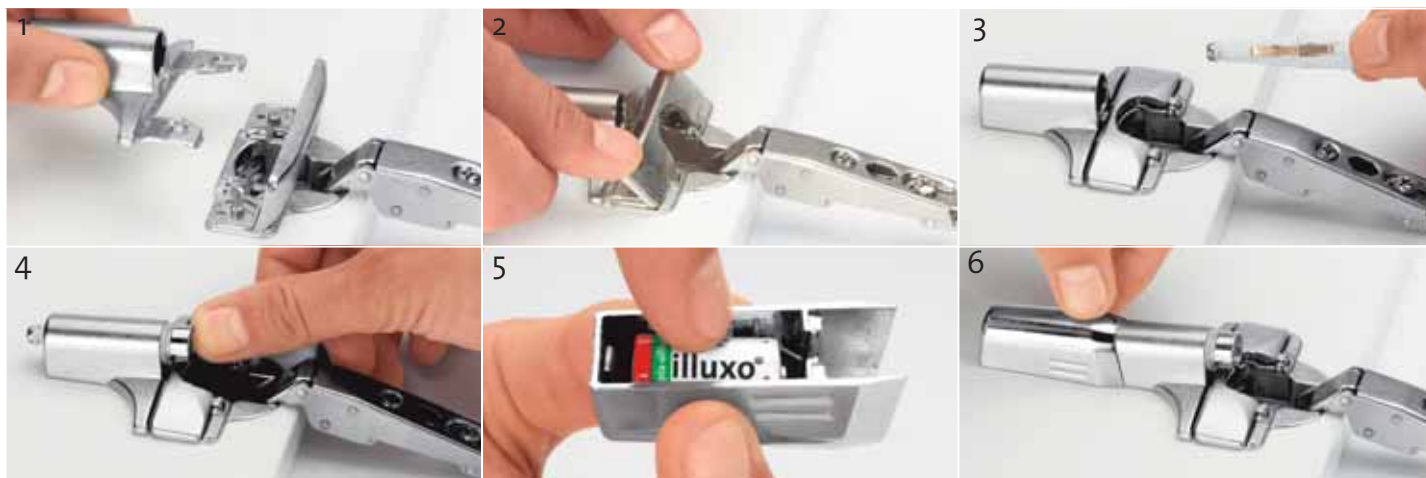
Isn't it wonderful when functionality, technology and design combine in an integral system like illuxo® as well as improving the furniture experience.

illuxo® redefines the joy of furniture.

And in combination with Soft-close®, the matching hinge-damping system from Mepla-Alfit, illuxo® is setting new standards in premium furniture design.



illuxo® CST – quick and easy to install.



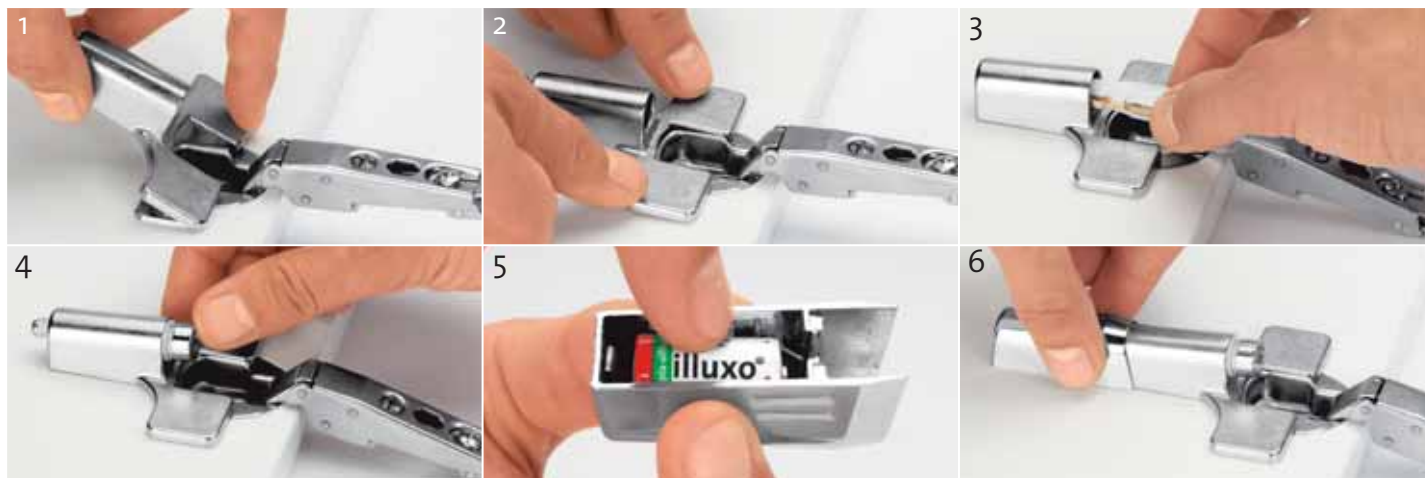
Mounting is toolless, easy and quick:

- 1 Take door off the cabinet, open flap of hinge cup.
- 2 Insert illuxo® CST adapter onto locator pins which are attached to the hinge cup. Close Twin NT flap of hinge cup completely
- 3 Insert LED-Spot into the illuxo® CST adapter.
- 4 Insert completely.
- 5 Insert battery into the battery cover cap..
- 6 Attach battery cover cap onto the illuxo® CST adapter and click-on with soft pressure
Click-on cabinet door to mounting plates.

illuxo® CST set		illuxo® battery	
<p>1 set consists of: 1 illuxo® CST adapter 1 LED-Spot (with white or blue light) 1 Battery cover cap 1 Battery</p>			
<p>illuxo® CST set, white light Ref. No. 924.200.41.7074 PU 1 set</p>	<p>illuxo® CST set, blue light Ref. No. 924.200.41.7054 PU 1 set</p>	<p>Ref. No. 924.000.70.0000 PU 1 pc.</p>	

PU = Packing Unit

illuxo® CS – quick and easy to install.



Mounting is toolless, easy and quick:

- 1 Take door off the cabinet. Insert illuxo® CS adapter into notches located on the sides of the hinge cup and attach adapter.
- 2 Press both sides of the adapter downwards until you hear a noticeable “click”.
- 3 Insert LED-Spot into the illuxo® CS adapter.
- 4 Insert completely.
- 5 Insert battery into the battery cover cap.
- 6 Attach battery cover cap with soft pressure onto the illuxo® CS adapter. Click-on cabinet door to mounting plates.

illuxo® CS set		illuxo® battery	
<p>1 set consists of:</p> <ul style="list-style-type: none"> 1 illuxo® CS adapter 1 LED-Spot (with white or blue light) 1 Battery cover cap 1 Battery 			
<p>illuxo® CS set, white light</p> <p>Ref. No 924.200.40.7074</p> <p>PU 1 set</p>	<p>illuxo® CS set, blue light</p> <p>Ref. No 924.200.40.7054</p> <p>PU 1 set</p>	<p>Ref. No 924.000.70.0000</p> <p>PU 1 pc.</p>	

PU = Packing Unit

One step ahead of the future.



MEPLA-WERKE
Lautenschläger GmbH & Co. KG

Egerländer Straße 2
D-64354 Reinheim

Telephone ++49 (0) 61 62 / 8 02 - 0
Telefax ++49 (0) 61 62 / 8 02 - 181
E-Mail info@mepla-alfit.de

Alfit AG

Sennemahd 10
A-6840 Götzis

Telephone ++43 (0) 55 23 / 59 60 - 0
Telefax ++43 (0) 55 23 / 6 45 10
E-Mail info@mepla-alfit.com

MEPLA  **ALFIT**
Feel the motion !

www.mepla-alfit.com