



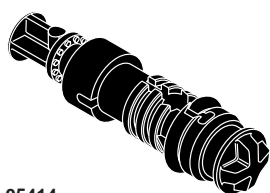
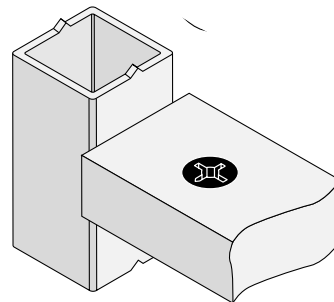
Fittings for purpose

**Cam and Dowel  
Connectors**

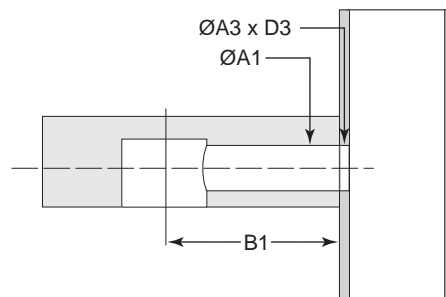
October 2004







## Quickfit-P2F Dowels

- Available in Ø8mm for panel-to-hollow profile applications
- Suitable for use with all Ø15mm Cam2000 products
- 'Klix' locking feature provides a strong, vibration proof, joint
- The only product to enable normal panel drilling and panel-to-hollow profile connection



05414

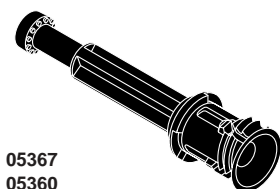
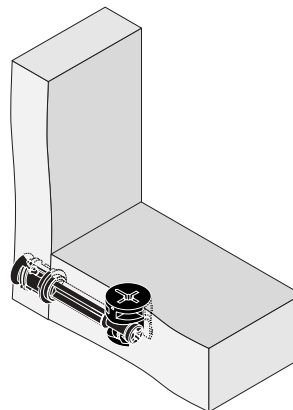


Part No	Description							A	B	D	A1	B1	D1	A2	B2	D2	A3	D3
05414	Quickfit-P2F	-	Z,P	V	✓	-	-	✓	-	-	8	24	-	-	-	-	8	thru
Z – Zinc		S – Steel		P – Plastic		V – Various		Z,P – Zinc/Plastic				N – Natural						

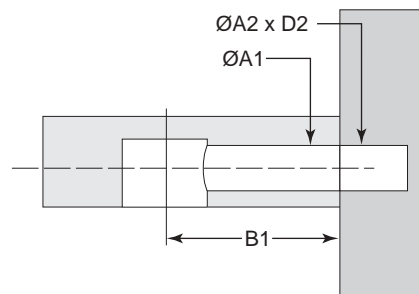
**Please note:** Due to varying manufacturing tolerances, Titus recommends a trial production run and through product testing of all system hardware before final production runs commence. Titus reserves the right to change technical specifications without prior notice.

## Quickfit-AM Dowels

- Available in Ø10mm for high load panel-to-panel applications
- Suitable for use with all Ø15mm Cam2000 products
- 'Klix' locking feature provides a strong, vibration proof, joint
- High strength product that eradicates the need for time consuming metal inserts



05367  
05360

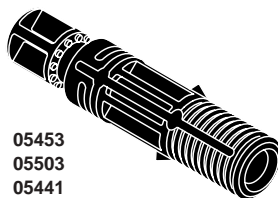
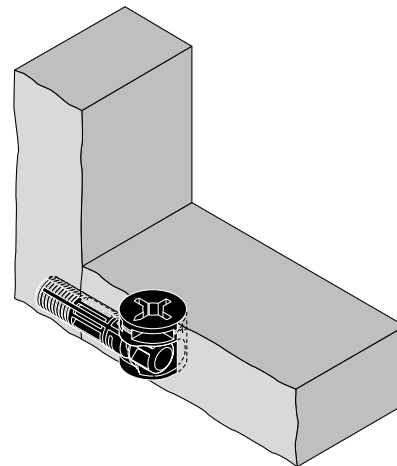


Part No	Description																	
							A	B	D	A1	B1	D1	A2	B2	D2	A3	D3	
05367	Quickfit-AM Ø10x24mm	-	Z	N	✓	-	✓	-	-	-	7-8	24	-	10	-	12.5	-	-
05360	Quickfit-AM Ø10x34mm	-	Z	N	✓	-	✓	-	-	-	7-8	34	-	10	-	12.5	-	-
Z – Zinc		S – Steel		P – Plastic		V – Various		Z,P – Zinc/Plastic				N – Natural						

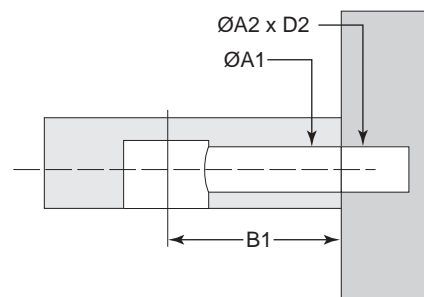
**Please note:** Due to varying manufacturing tolerances, Titus recommends a trial production run and through product testing of all system hardware before final production runs commence. Titus reserves the right to change technical specifications without prior notice.

## Quickfit-TL2 Dowels

- Available in Ø5mm and Ø8mm for panel-to-panel applications
- Suitable for use with all Ø15mm Cam2000 products
- 'Klix' locking feature provides a strong, vibration proof, joint
- Highly tolerant in edge-inserted applications



05453  
05503  
05441  
05474

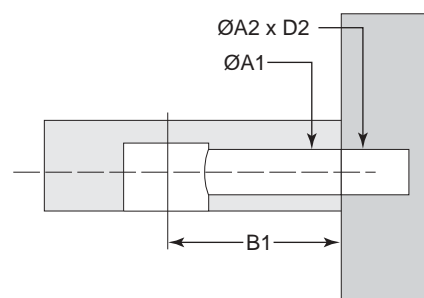
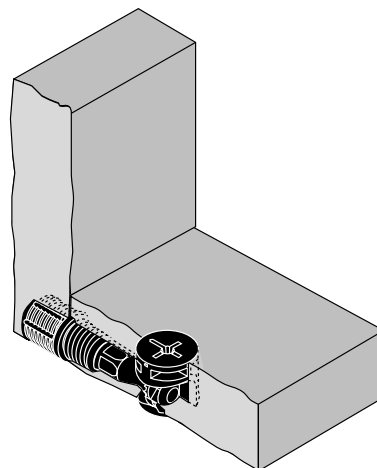


Part No	Description																		
								A	B	D	A1	B1	D1	A2	B2	D2	A3	D3	
05453	Quickfit-TL2 Ø5x24mm	-	Z,P	V	✓	-	✓	-	-	-	8	23-25	-	5	-	12	-	-	
05503	Quickfit-TL2 Ø5x34mm	-	Z,P	V	✓	-	✓	-	-	-	8	33-35	-	5	-	12	-	-	
05441	Quickfit-TL2 Ø8x24mm	-	Z,P	V	✓	-	✓	-	-	-	8	23-27	-	8	-	12	-	-	
05474	Quickfit-TL2 Ø8x34mm	-	Z,P	V	✓	-	✓	-	-	-	8	33-37	-	8	-	12	-	-	
Z – Zinc		S – Steel		P – Plastic		V – Various		Z,P – Zinc/Plastic				N – Natural							

**Please note:** Due to varying manufacturing tolerances, Titus recommends a trial production run and through product testing of all system hardware before final production runs commence. Titus reserves the right to change technical specifications without prior notice.

## Quickfit Dowels

- Available in Ø5mm, Ø8mm and Ø10mm for panel-to-panel applications
- Suitable for use with all Ø12mm and Ø15mm Cam2000 products
- 'Klix' locking feature provides a strong, vibration proof, joint
- Depth stop collar for accurate insertion



Part No	Description	Material & Features						Dimensions (mm)											
		Spring	M	Wrench	Lock	Wrench	Hand	A	B	D	A1	B1	D1	A2	B2	D2	A3	D3	
05714	Quickfit Ø5x24mm	-	Z,P	V	✓	-	-	✓	-	-	-	8	24	-	5	-	12	-	-
05685	Quickfit Ø5x34mm	-	Z,P	V	✓	-	-	✓	-	-	-	8	34	-	5	-	12	-	-
05556	Quickfit Ø8x20mm	-	Z,P	V	✓	-	-	✓	-	-	-	8	20	-	8	-	12	-	-
05563	Quickfit Ø8x24mm	-	Z,P	V	✓	-	-	✓	-	-	-	8	24	-	8	-	12	-	-
05552	Quickfit Ø8x28mm	-	Z,P	V	✓	-	-	✓	-	-	-	8	28	-	8	-	12	-	-
05554	Quickfit Ø8x34mm	-	Z,P	V	✓	-	-	✓	-	-	-	8	34	-	8	-	12	-	-
05570	Quickfit Ø10x24mm	-	Z,P	V	✓	-	-	✓	-	-	-	8	24	-	10	-	12	-	-
05572	Quickfit Ø10x34mm	-	Z,P	V	✓	-	-	✓	-	-	-	8	34	-	10	-	12	-	-

Z – Zinc

S – Steel

P – Plastic

V – Various

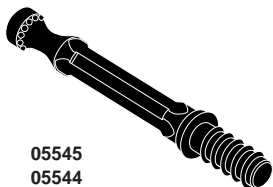
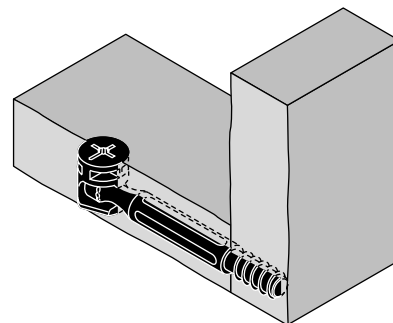
Z,P – Zinc/Plastic

N – Natural

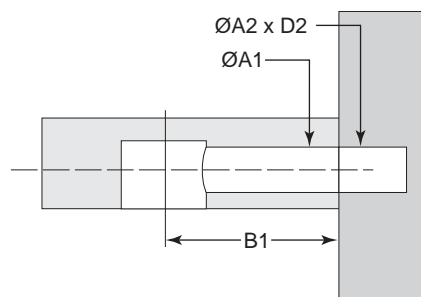
**Please note:** Due to varying manufacturing tolerances, Titus recommends a trial production run and through product testing of all system hardware before final production runs commence. Titus reserves the right to change technical specifications without prior notice.

## Twinstart Dowels

- Available in a variety of thread and drive recess combinations to suit most panel-to-panel applications
- Suitable for use with all Ø12mm and Ø15mm Cam2000 products
- 'Klix' locking feature provides a strong, vibration proof, joint
- Twinstart thread results in reduced insertion times



05545  
05544  
05543  
05535  
05548  
05534



Part No	Description																		
									A	B	D	A1	B1	D1	A2	B2	D2	A3	D3
05545	Twinstart Dowel Ø6x20mm	Euro	Z	N	✓		-	-	-	-	-	6-7	20	-	5	-	12	-	-
05544	Twinstart Dowel Ø6x24mm	Euro	Z	N	✓		-	-	-	-	-	6-7	24	-	5	-	12	-	-
05543	Twinstart Dowel Ø6x30mm	Euro	Z	N	✓		-	-	-	-	-	6-7	30	-	5	-	12	-	-
05535	Twinstart Dowel Ø7x24mm	Euro	Z	N	✓		-	-	-	-	-	7-8	24	-	5	-	12	-	-
05548	Twinstart Dowel Ø7x24mm	M6	Z	N	✓		-	-	-	-	-	7-8	24	-	M6	-	9	-	-
05534	Twinstart Dowel Ø7x34mm	Euro	Z	N	✓		-	-	-	-	-	7-8	34	-	5	-	12	-	-

Z – Zinc

S – Steel

P – Plastic

V – Various

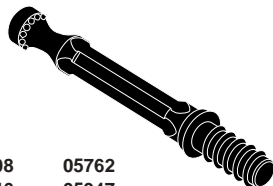
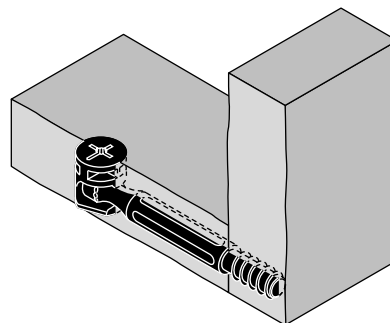
Z,P – Zinc/Plastic

N – Natural

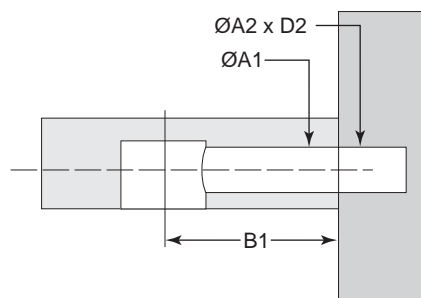
**Please note:** Due to varying manufacturing tolerances, Titus recommends a trial production run and through product testing of all system hardware before final production runs commence. Titus reserves the right to change technical specifications without prior notice.

## Conventional Dowels

- Available in a variety of thread and drive recess combinations to suit most panel-to-panel applications
- Suitable for use with all Ø12mm and Ø15mm Cam2000 products
- 'Klix' locking feature provides a strong, vibration proof, joint
- Depth stop collar for accurate insertion



05908    05762  
05546    05947  
05758    05746  
05716    05584  
05838

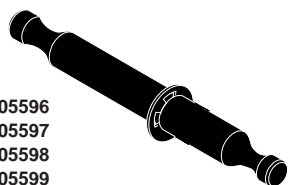
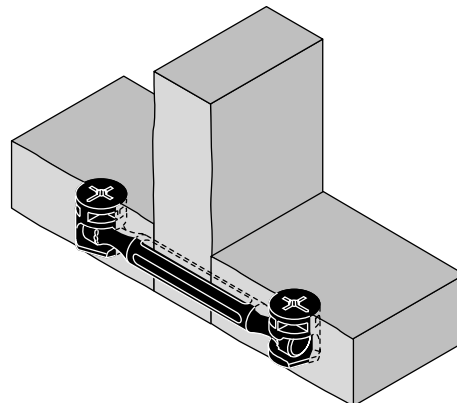


Part No	Description																		
								A	B	D	A1	B1	D1	A2	B2	D2	A3	D3	
05908	Dowel Ø6x20mm	Euro	Z	N	✓	⊕	-	-	-	-	-	6-7	20	-	5	-	10	-	-
05546	Dowel Ø6x24mm	Euro	Z	N	✓	⊕	-	-	-	-	-	6-7	24	-	5	-	9	-	-
05746	Dowel Ø7x24mm	M6	Z	N	✓	⊕	-	-	-	-	-	7-8	24	-	M6	-	9	-	-
05758	Dowel Ø7x24mm	Euro	Z	N	✓	⊕	-	-	-	-	-	7-8	24	-	5	-	12	-	-
05716	Twinstart Dowel Ø7x28mm	Euro	Z	N	✓	⊕	-	-	-	-	-	8	28	-	4	-	13	-	-
05838	Twinstart Dowel Ø7x33.5mm	Euro	Z	N	✓	⊕	-	-	-	-	-	7-8	34	-	5	-	12	-	-
05584	Dowel Ø7x34mm	M6	Z	N	✓	⊕	-	-	-	-	-	7-8	34	-	M6	-	9	-	-
05762	Dowel Ø7x34mm	Euro	Z	N	✓	⊕	-	-	-	-	-	7-8	34	-	5	-	9	-	-
05947	Dowel Ø8x24mm	Euro	Z	N	✓	⊕	-	-	-	-	-	7-8	24	-	8	-	12	-	-
Z – Zinc		S – Steel		P – Plastic		V – Various		Z,P – Zinc/Plastic				N – Natural							

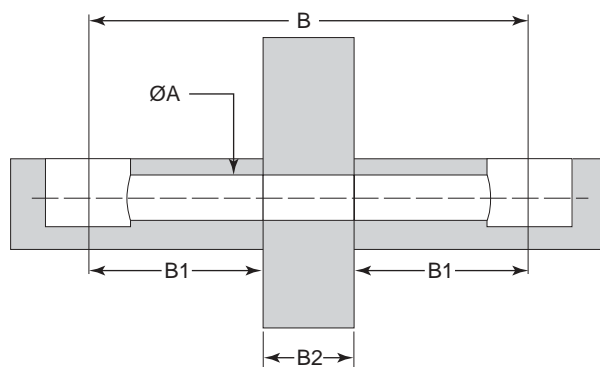
**Please note:** Due to varying manufacturing tolerances, Titus recommends a trial production run and through product testing of all system hardware before final production runs commence. Titus reserves the right to change technical specifications without prior notice.

## Double-ended Dowel (with circlip)

- Available in Ø5mm and Ø7mm
- Suitable for use with all Ø15mm Cam2000 products
- Circlip for accurate positioning
- Available in a variety of lengths to suit most panel-to-panel applications



05596  
05597  
05598  
05599  
05775  
05752  
05774  
05751  
05772



Part No	Description																		
								A	B	D	A1	B1	D1	A2	B2	D2	A3	D3	
05596	Dowel Ø5x64mm	—	S	N	—	—	—	5	64	—	—	24	—	—	16	—	—	—	
05597	Dowel Ø5x84mm	—	S	N	—	—	—	5	84	—	—	34	—	—	16	—	—	—	
05598	Dowel Ø5x67mm	—	S	N	—	—	—	5	67	—	—	24	—	—	19	—	—	—	
05599	Dowel Ø5x87mm	—	S	N	—	—	—	5	87	—	—	34	—	—	19	—	—	—	
05775	Dowel Ø7x64mm	—	S	N	—	—	—	7-8	64	—	—	24	—	—	16	—	—	—	
05752	Dowel Ø7x84mm	—	S	N	—	—	—	7-8	84	—	—	34	—	—	16	—	—	—	
05774	Dowel Ø7x67mm	—	S	N	—	—	—	7-8	67	—	—	24	—	—	19	—	—	—	
05751	Dowel Ø7x87mm	—	S	N	—	—	—	7-8	87	—	—	34	—	—	19	—	—	—	
05772	Dowel Ø7x86mm	—	S	N	—	—	—	7-8	86	—	—	34	—	—	18	—	—	—	

Z – Zinc

S – Steel

P – Plastic

V – Various

Z,P – Zinc/Plastic

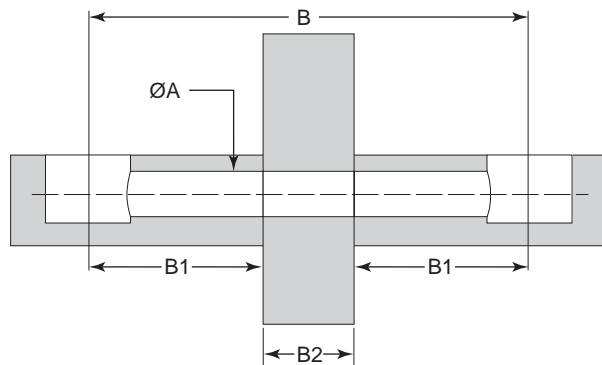
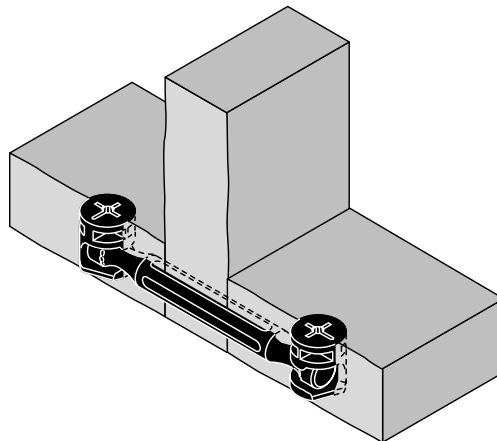
N – Natural

**Please note:** Due to varying manufacturing tolerances, Titus recommends a trial production run and through product testing of all system hardware before final production runs commence. Titus reserves the right to change technical specifications without prior notice.



## Double-ended Dowel (without circlip)

- Available in Ø7mm
- Suitable for use with all Ø15mm Cam2000 products
- No Circlip for increased tolerance
- Available in a variety of lengths to suit most panel-to-panel applications



Part No	Description																		
								A	B	D	A1	B1	D1	A2	B2	D2	A3	D3	
05929	Dowel Ø7x48mm	—	Z	N	✓	—	—	7-8	46	—	—	24	—	—	0	—	—	—	
05901	Dowel Ø7x48mm	—	S	N	—	—	—	7-8	46	—	—	24	—	—	0	—	—	—	
05757	Dowel Ø7x68mm	—	Z	N	✓	—	—	7-8	68	—	—	34	—	—	0	—	—	—	
05900	Dowel Ø7x68mm	—	S	N	—	—	—	7-8	68	—	—	34	—	—	0	—	—	—	
05744	Dowel Ø7x53mm	—	S	N	—	—	—	7-8	53	—	—	24	—	—	5	—	—	—	
05857	Dowel Ø7x64mm	—	S	N	—	—	—	7-8	64	—	—	24	—	—	16	—	—	—	
05858	Dowel Ø7x84mm	—	S	N	—	—	—	7-8	84	—	—	34	—	—	16	—	—	—	
05859	Dowel Ø7x86mm	—	S	N	—	—	—	7-8	86	—	—	34	—	—	18	—	—	—	
05778	Dowel Ø7x67mm	—	S	N	—	—	—	7-8	67	—	—	24	—	—	19	—	—	—	
05753	Dowel Ø7x87mm	—	S	N	—	—	—	7-8	87	—	—	34	—	—	19	—	—	—	

Z – Zinc

S – Steel

P – Plastic

V – Various

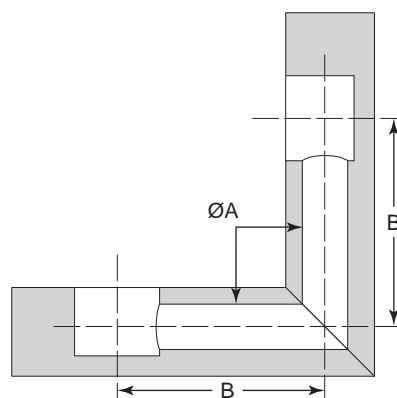
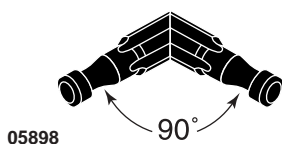
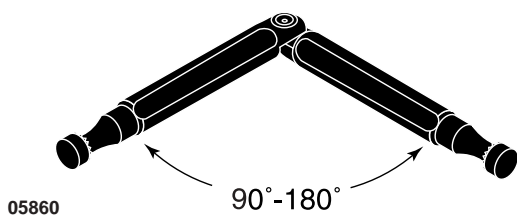
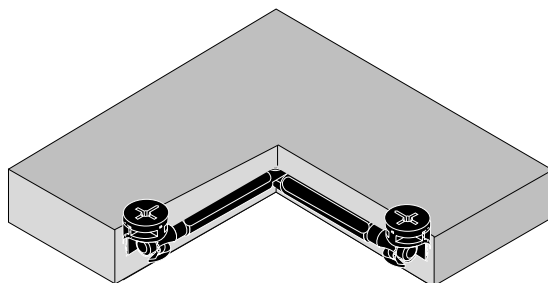
Z,P – Zinc/Plastic







N – Natural

**Please note:** Due to varying manufacturing tolerances, Titus recommends a trial production run and through product testing of all system hardware before final production runs commence. Titus reserves the right to change technical specifications without prior notice.

## Angled Dowels

- Suitable for applications requiring angled joints
- Suitable for use with all Ø12mm and Ø15mm Cam2000 products
- 'Klix' locking feature provides a strong, vibration proof, joint
- Adjustable angle from 90 deg. to 180 deg.

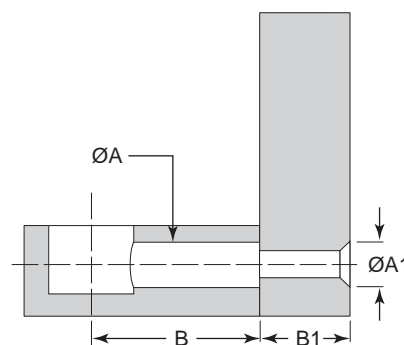
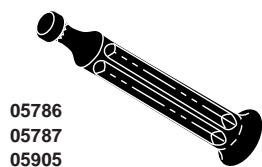
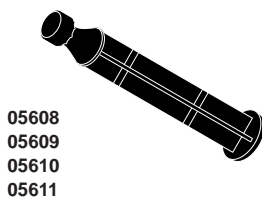
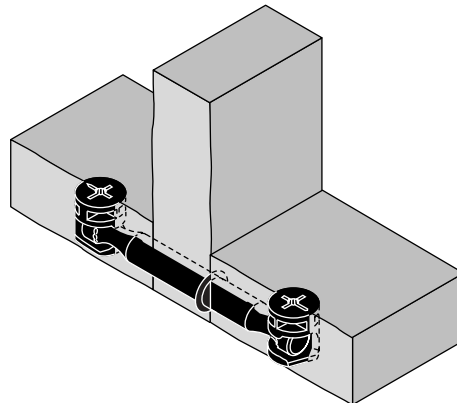


Part No	Description																			
								A	B	D	A1	B1	D1	A2	B2	D2	A3	D3		
05860	Dowel Ø7 (90 deg.-180 deg)	-	Z	N	-	-	-	-	7-8	44	-	-	-	-	-	-	-	-	-	-
05898	Dowel Ø7 (90 deg.-180 deg)	-	Z	N	-	-	-	-	7-8	20	-	-	-	-	-	-	-	-	-	-
Z – Zinc		S – Steel		P – Plastic		V – Various		Z,P – Zinc/Plastic				N – Natural								

**Please note:** Due to varying manufacturing tolerances, Titus recommends a trial production run and through product testing of all system hardware before final production runs commence. Titus reserves the right to change technical specifications without prior notice.

## End Dowels

- Available in a variety of head and length combinations to suit most end panel applications
- Suitable for use with all Ø12mm and Ø15mm Cam2000 products
- 'Klix' locking feature provides a strong, vibration proof, joint
- Both 'mushroom' and countersunk headed versions available



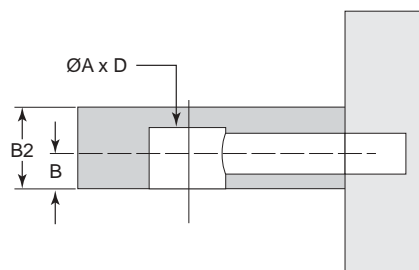
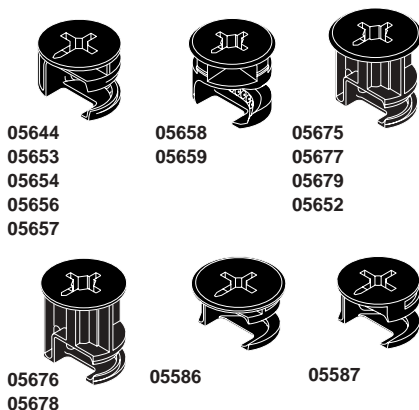
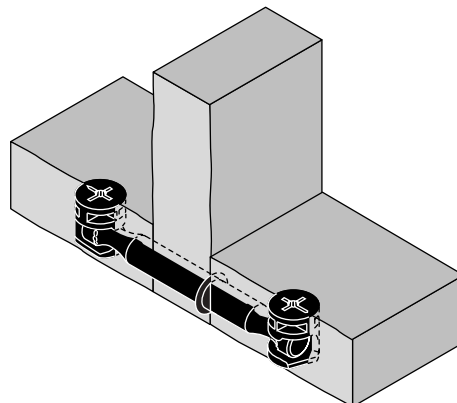
Part No	Description																		
								A	B	D	A1	B1	D1	A2	B2	D2	A3	D3	
05608	Mushroom Dowel Ø7x24mm	-	Z	V	-	-	-	-	7-8	24	-	-	16	-	-	-	-	-	-
05610	Mushroom Dowel Ø7x34mm	-	Z	V	-	-	-	-	7-8	34	-	-	16	-	-	-	-	-	-
05609	Mushroom Dowel Ø7x24mm	-	Z	V	-	-	-	-	7-8	24	-	-	16	-	-	-	-	-	-
05611	Mushroom Dowel Ø7x34mm	-	Z	V	-	-	-	-	7-8	34	-	-	16	-	-	-	-	-	-
05905	Countersunk Dowel Ø6x20mm	-	Z	V	-	-	-	-	6-7	20	-	11	16	-	-	-	-	-	-
05786	Countersunk Dowel Ø7x24mm	-	Z	V	-	-	-	-	7-8	24	-	11	16	-	-	-	-	-	-
05787	Countersunk Dowel Ø7x24mm	-	Z	V	-	-	-	-	7-8	24	-	11	16	-	-	-	-	-	-
Z – Zinc		S – Steel		P – Plastic		V – Various		Z,P – Zinc/Plastic				N – Natural							

**Please note:** Due to varying manufacturing tolerances, Titus recommends a trial production run and through product testing of all system hardware before final production runs commence. Titus reserves the right to change technical specifications without prior notice.

# Cam and Dowel Connectors 5

## Dia.15mm Cam2000

- Available in a variety of head, drive recess and board thickness versions to suit most applications
- Suitable for use with all Titus dowels (except 5410)
- 'Klix' locking feature provides a strong, vibration proof, joint
- Linear cam profile results in smooth, easy cam rotation and dowel pull-up



Part No	Description																		
									A	B	D	A1	B1	D1	A2	B2	D2	A3	D3
05653	Cam2000 Ø15x10.4mm	-	Z	N	✓	⊕	-	✓	15	6	11	-	-	-	-	12/13	-	-	-
05586	Cam2000 Ø15x9.9mm Headed 'Ultraflat'	-	Z	N	✓	⊕	-	✓	15	6	10	-	-	-	-	12	-	-	-
05587	Cam2000 Ø15x9.9mm 'Ultraflat'	-	Z	N	✓	⊕	-	✓	15	6	10	-	-	-	-	12/13	-	-	-
05652	Cam2000 Ø15x10.9mm-Headed	-	Z	N	✓	⊖	-	✓	15	6.5	11	-	-	-	-	13	-	-	-
05644	Cam2000 Ø15x11.9mm	-	Z	N	✓	⊕	-	✓	15	7.5	12	-	-	-	-	15/16	-	-	-
05654	Cam2000 Ø15x11.9mm	-	Z	N	✓	⊖	-	✓	15	7.5	12	-	-	-	-	15/16	-	-	-
05658	Cam2000 Ø15x12.4mm-Headed	-	Z	N	✓	⊖	-	✓	15	8	12	-	-	-	-	16	-	-	-
05656	Cam2000 Ø15x13.2mm	-	Z	N	✓	⊖	-	✓	15	8.5	12	-	-	-	-	18/19	-	-	-
05659	Cam2000 Ø15x13.9mm-Headed	-	Z	N	✓	⊖	-	✓	15	9.5	14	-	-	-	-	19	-	-	-
05657	Cam2000 Ø15x15.2mm	-	Z	N	✓	⊖	-	✓	15	10.8	15.5	-	-	-	-	22/23	-	-	-
05675	Cam2000 Ø15x15.9mm-Headed	-	Z	N	✓	⊖	-	✓	15	11.5	16	-	-	-	-	23	-	-	-
05676	Cam2000 Ø15x16.7mm	-	Z	N	✓	⊖	-	✓	15	12.3	17	-	-	-	-	25/26	-	-	-
05677	Cam2000 Ø15x17.4mm-Headed	-	Z	N	✓	⊖	-	✓	15	13	17.5	-	-	-	-	26	-	-	-
05678	Cam2000 Ø15x18.2mm	-	Z	N	✓	⊖	-	✓	15	13.8	19	-	-	-	-	28/29	-	-	-
05679	Cam2000 Ø15x18.9mm	-	Z	N	✓	⊖	-	✓	15	14.5	19	-	-	-	-	29	-	-	-

Z – Zinc

S – Steel

P – Plastic

V – Various

Z,P – Zinc/Plastic

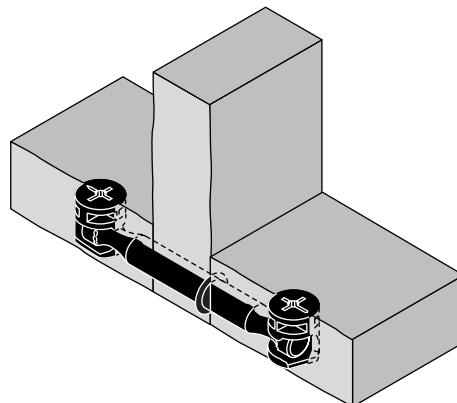
N – Natural

**Please note:** Due to varying manufacturing tolerances, Titus recommends a trial production run and through product testing of all system hardware before final production runs commence. Titus reserves the right to change technical specifications without prior notice.

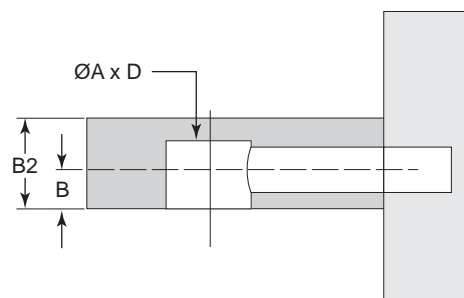
# Cam and Dowel Connectors 5

## Dia.12mm Cam2000

- Available in a variety of head, drive recess and board thickness versions to suit most applications
- Particularly suited to drawer front attachment applications
- 'Klix' locking feature provides a strong, vibration proof, joint
- Linear cam profile results in smooth, easy cam rotation and dowel pull-up



05574 05579  
05575 05580  
05576 05581  
05577  
05578



Part No	Description																		
								A	B	D	A1	B1	D1	A2	B2	D2	A3	D3	
05574	Cam2000 Ø12x9.15mm-Headed	-	Z	N	✓	⊕	-	✓	12	5.25	10	-	-	-	-	12	-	-	-
05575	Cam2000 Ø12x9.9mm	-	Z	N	✓	⊕	-	✓	12	6	10.5	-	-	-	-	12/13	-	-	-
05576	Cam2000 Ø12x9.9mm-Headed	-	Z	N	✓	⊕	-	✓	12	6	10.5	-	-	-	-	12	-	-	-
05577	Cam2000 Ø12x10.4mm-Headed	-	Z	N	✓	⊕	-	✓	12	6.5	11	-	-	-	-	13	-	-	-
05578	Cam2000 Ø12x11.4mm	-	Z	N	✓	⊕	-	✓	12	7.5	12	-	-	-	-	15/16	-	-	-
05579	Cam2000 Ø12x11.9mm-Headed	-	Z	N	✓	⊕	-	✓	12	8	12.5	-	-	-	-	16	-	-	-
05580	Cam2000 Ø12x12.7mm	-	Z	N	✓	⊕	-	✓	12	8.8	13	-	-	-	-	18/19	-	-	-
05581	Cam2000 Ø12x13.4mm-Headed	-	Z	N	✓	⊕	-	✓	12	9.5	14	-	-	-	-	19	-	-	-

Z – Zinc

S – Steel

P – Plastic

V – Various

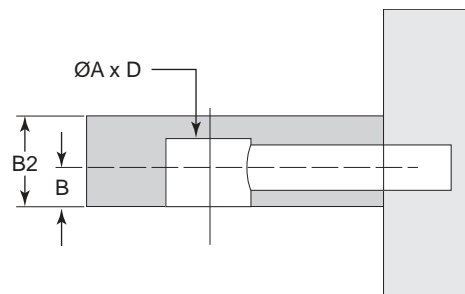
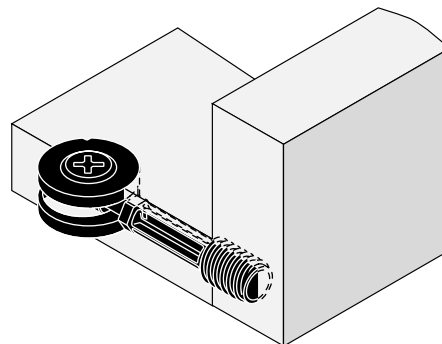
Z,P – Zinc/Plastic

N – Natural

**Please note:** Due to varying manufacturing tolerances, Titus recommends a trial production run and through product testing of all system hardware before final production runs commence. Titus reserves the right to change technical specifications without prior notice.

## Heavy duty Dowels

- Available in Ø10mm for high load panel-to-panel applications
- Suitable for use with Ø20mm Heavy duty cam
- 'Klix' locking feature provides a strong, vibration proof, joint
- High strength product that eradicates the need for time consuming metal inserts

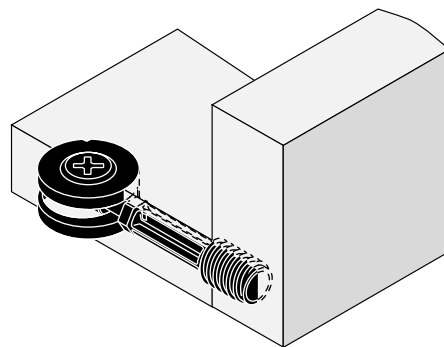


Part No	Description							A	B	D	A1	B1	D1	A2	B2	D2	A3	D3
05410	Dowel Ø7x34mm	-	Z	N	✓	⊕	-	✓	-	-	8	34	-	10	-	13	-	-
Z – Zinc		S – Steel		P – Plastic		V – Various		Z,P – Zinc/Plastic				N – Natural						

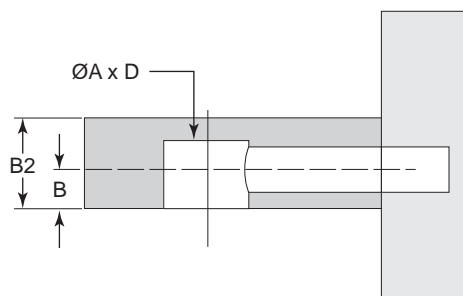
**Please note:** Due to varying manufacturing tolerances, Titus recommends a trial production run and through product testing of all system hardware before final production runs commence. Titus reserves the right to change technical specifications without prior notice.

## Heavy duty cam

- Available in Ø20mm for a variety of panel thicknesses
- Suitable for use with Ø10x34mm Heavy duty dowel
- 'Klix' locking feature provides a strong, vibration proof, joint
- High strength product that eradicates the need for time consuming metal inserts



05409



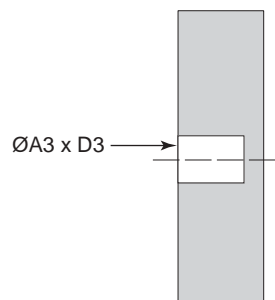
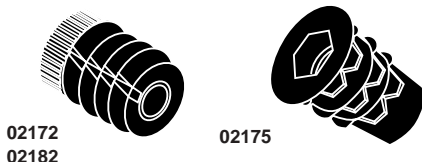
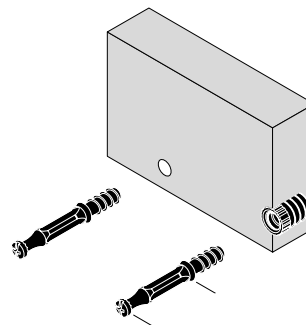
Part No	Description	Material and Finish Options																
								A	B	D	A1	B1	D1	A2	B2	D2	A3	D3
05409	Cam Ø25x13mm	-	Z	N	-		-	-	25	V	13	-	-	-	V	-	-	-
Z – Zinc		S – Steel		P – Plastic		V – Various		Z,P – Zinc/Plastic			N – Natural							







**Please note:** Due to varying manufacturing tolerances, Titus recommends a trial production run and through product testing of all system hardware before final production runs commence. Titus reserves the right to change technical specifications without prior notice.

# Cam and Dowel Connectors 5

## Inserts

- Available in both zinc and steel for use in various applications
- Suitable for use with various threaded dowels
- Suitable for use with various panel thicknesses
- Knock-in and screw-in versions available



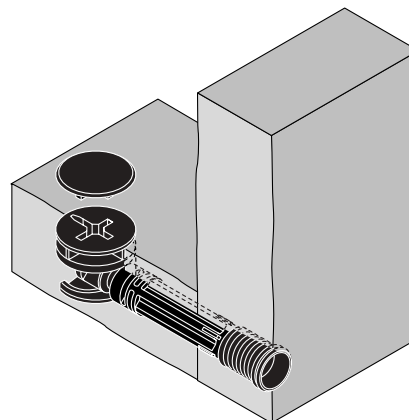
Part No	Description																		
								A	B	D	A1	B1	D1	A2	B2	D2	A3	D3	
02172	Inserts Ø10x11.75mm	Euro	P	-	-	-	✓	-	-	-	-	-	-	-	-	-	-	10	12.5
02182	Twinstart insert Ø10x11.75mm	Euro	P	-	-	-	✓	-	-	-	-	-	-	-	-	-	-	10	12.5
02175	Insert Ø9x13mm	M6	Z	N	-	-	-	-	-	-	-	-	-	-	-	-	-	9	13.5
Z – Zinc		S – Steel		P – Plastic		V – Various		Z,P – Zinc/Plastic				N – Natural							

**Please note:** Due to varying manufacturing tolerances, Titus recommends a trial production run and through product testing of all system hardware before final production runs commence. Titus reserves the right to change technical specifications without prior notice.

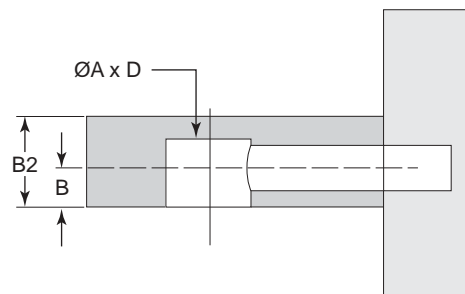


## Covercaps

- Available in a variety of colours
- Suitable for use with both pozi and hex cam drive features
- Suitable for use with various diameter cams
- Both domed and flat versions available



01026  
01029 (pozi)



Part No	Description																				
		A	B	D	A1	B1	D1	A2	B2	D2	A3	D3									
01020	Covercap Ø13mm - pozi recess	-	P	V	-	-	-	-	-	-	-	-	-	-	-	-	-	-	-	-	-
01042	Covercap Ø13mm - hex recess	-	P	V	-	-	-	-	-	-	-	-	-	-	-	-	-	-	-	-	-
01026	Covercap Ø17mm - universal	-	P	V	-	-	-	-	-	-	-	-	-	-	-	-	-	-	-	-	-
01029	Covercap Ø17mm - pozi recess	-	P	V	-	-	-	-	-	-	-	-	-	-	-	-	-	-	-	-	-
Z – Zinc		S – Steel		P – Plastic		V – Various		Z,P – Zinc/Plastic				N – Natural									

**Please note:** Due to varying manufacturing tolerances, Titus recommends a trial production run and through product testing of all system hardware before final production runs commence. Titus reserves the right to change technical specifications without prior notice.

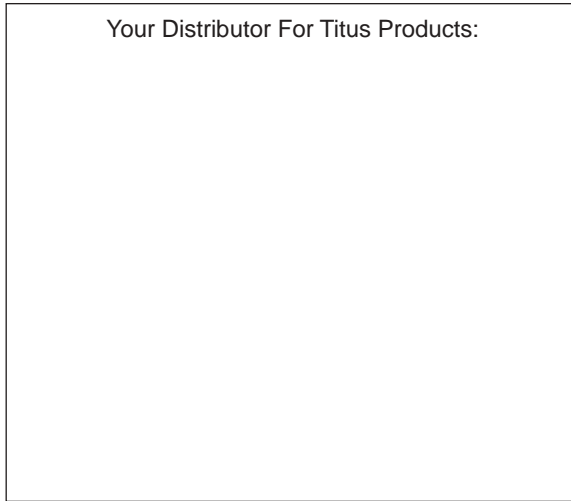
# Cam and Dowel Connectors 5

## Compatibility table

	Dia.15 Cam 2000	Dia.12 Cam 2000	Heavy Duty Cam
Quickfit-P2F Dowels	✓	✗	✗
Quickfit-AM Dowels	✓	✗	✗
Quickfit-TL2 Dowels	✓	✓	✗
Quickfit Dowels	✓	✓	✗
Twinstart Dowels	✓	✓	✗
Conventional Dowels	✓	✓	✗
Double-ended Dowel (with Circlip)	✓	✓	✗
Double-ended Dowel (without Circlip)	✓	✓	✗
Angled Dowels	✓	✓	✗
End Dowels	✓	✓	✗
Heavy Duty Dowels	✗	✗	✓

**Please note:** Due to varying manufacturing tolerances, Titus recommends a trial production run and through product testing of all system hardware before final production runs commence. Titus reserves the right to change technical specifications without prior notice.

Your Distributor For Titus Products:



# Titus<sup>®</sup>

Fittings for purpose

Titus International Plc  
Ridgeway Industrial Estate  
Iver, Buckinghamshire  
SLO 9HW  
United Kingdom

Tel +44 (0)1753 778278  
Fax +44 (0)1753 778225  
Website [www.titusint.com](http://www.titusint.com)  
E-mail [info@titusint.com](mailto:info@titusint.com)

UK  
Titus Tool Company Ltd.  
Ridgeway Industrial Estate  
Iver, Buckinghamshire  
SLO 9HW  
United Kingdom  
Tel +44 (0)1753 654680  
Fax +44 (0)1753 655254

SCANDINAVIA  
Titus Tool Company Ltd.  
Verkstadsgatan 1B  
S-39239, Kalmar  
Sweden  
Tel +46 (0)480 12800  
Fax +46 (0)480 59050

THE AMERICAS  
Titus Tool Co. Inc.  
22020 72nd Avenue South  
Kent, WA 98032  
USA  
Tel: 800 762 1616 toll free  
Tel +1 253 872 2829  
Fax +1 253 872 2827

CENTRAL EUROPE  
Titus-Beschläge GmbH &  
Co.KG  
Sundernkamp 19  
D-32130 Enger  
Germany  
Tel +49 (0)5224 976-100  
Fax +49 (0)5224 976-350

ASIA/PACIFIC  
Titus Tool Co. Pte. Ltd.  
39 Changi South Avenue 2  
Singapore 486352  
Tel +(0)65 6383 3922  
Fax +(0)65 6383 3178

POLAND  
Titus Polska Sp.z o.o.  
ul.Powstańców Wielkopolskich 110  
PL-62-002 Suchy Las/ Poznań  
Poland  
Tel +48 (0)61 811-56-84  
Fax +48 (0)61 811-54-02

CZECH REPUBLIC  
Český Titus s.r.o.  
Státek 1  
CZ-338 21 Osek u Rokycan  
Tschechien / Czech Republic  
Tel +420 (0)371 72 55 75  
Fax +420 (0)181 72 73 41