



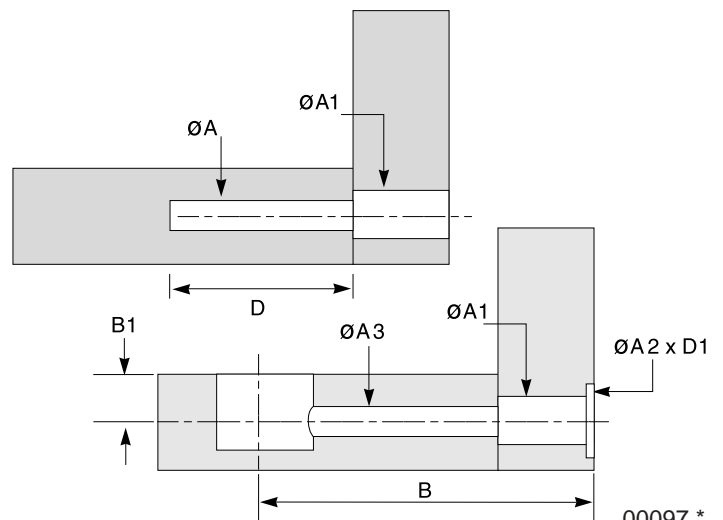
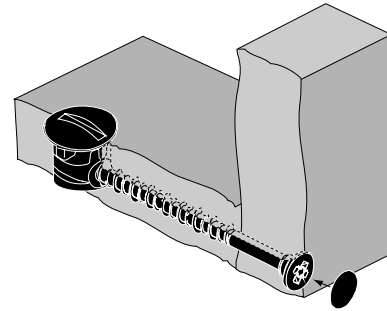
Fittings for purpose

Hardware Solutions

October 2004

Fittings for rigid assembly systems Hi-Lo™ screw

- Hi-Lo screws have a twin thread for faster insertion
- Hi threads and Lo threads combine to give excellent pull out in chipboard
- Funnel head design means no countersinking
- Steel is case hardened for extra strength



* decorative head

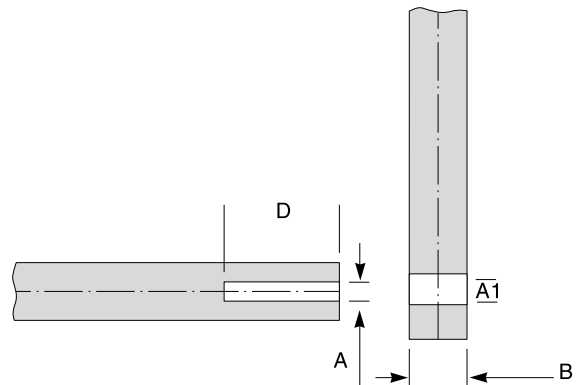
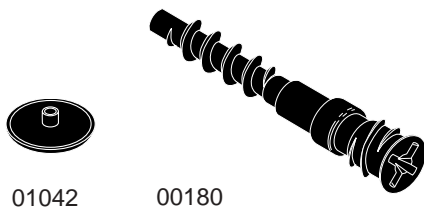
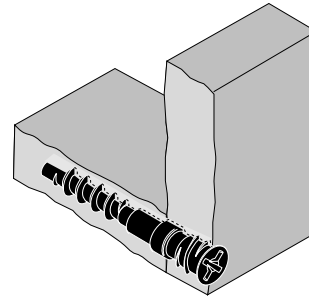
Part No	Description																		
								A	B	D	A1	B1	D1	A2	B2	D2	A3	D3	
00062	4x24 Funnel (No 8)	Hi-Lo	S	V	-		-	-	3	-	9	5	-	-	-	-	-	5	-
00066	4x19 Funnel (No 8)	Hi-Lo	S	V	-		-	-	3	-	9	5	-	-	-	-	-	5	-
00068	4x28 Funnel (No 8)	Hi-Lo	S	V	-		-	-	3	-	9	5	-	-	-	-	-	5	-
00071	4x28 Funnel (No 8)	Hi-Lo	S	V	-		-	-	3	-	9	5	-	-	-	-	-	5	-
00077	4x45 Funnel (No 8)	Hi-Lo	S	V	-		-	-	3	50	9	5	7.5/8	-	-	-	-	5	-
00084	5x47 Funnel (No 11)	Hi-Lo	S	V	-		-	-	3.75	42	30	5	7.5/8	-	-	-	-	5.5	-
00097	5x57 Funnel (No 11)	Hi-Lo	S	V	-		-	-	3.75	50	40	7	7.5/8	2.0	13	-	-	5.5	-
00171	4x45 Funnel (No 8)	Hi-Lo	S	V	-		-	-	3	50	9	5	7.5/8	-	-	-	-	5	-
00172	4x55 Funnel (No 8)	Hi-Lo	S	V	-		-	-	3	50	9	5	7.5/8	-	-	-	-	5	-
06074	4x38 Funnel (No 8)	Hi-Lo	S	V	-		-	-	3	-	9	5	-	-	-	-	-	5	-
06077	4x50 Funnel (No 8)	Hi-Lo	S	V	-		-	-	3	45	9	5	7.5/8	-	-	-	-	5	-
06080	5x50 Funnel (No 11)	Hi-Lo	S	V	-		-	-	3.75	45	30	5	7.5/8	-	-	-	-	5.5	-
06081	5x50 Funnel (No 11)	Hi-Lo	S	V	-		-	-	3.75	45	30	5	7.5/8	-	-	-	-	5.5	-

Z – Zinc S – Steel P – Plastic V – Various Z,P – Zinc/Plastic N – Natural

Please note: Due to varying manufacturing tolerances, Titus recommends a trial production run and through product testing of all system hardware before final production runs commence. Titus reserves the right to change technical specifications without prior notice.

Fittings for rigid assembly systems Double-locking assembly screw + cap

- High performance from widely spaced primary thread
- Finer secondary thread provides additional holding power
- Increased support for vertical panel is gained from the funnel head with collar at its base
- One-piece fitting

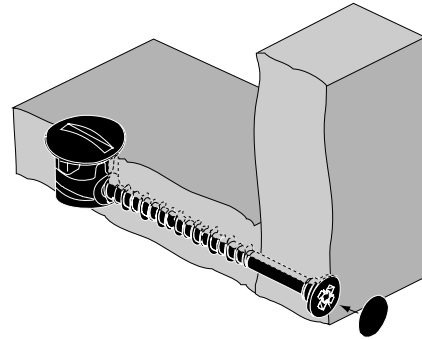


Part No	Description																	
								A	B	D	A1	B1	D1	A2	B2	D2	A3	D3
00180	Double-locking screw 6x42	—	Z	N	—	⊕	—	5	15/16	30	7.0/7.5	—	—	—	—	—	—	—
01042	Cover Cap	—	P	V	—	—	✓	—	—	—	—	—	—	—	—	—	—	—
Z – Zinc		S – Steel		P – Plastic		V – Various		Z,P – Zinc/Plastic				N – Natural						

Please note: Due to varying manufacturing tolerances, Titus recommends a trial production run and through product testing of all system hardware before final production runs commence. Titus reserves the right to change technical specifications without prior notice.

Fittings for rigid assembly systems Barrel nut/Screw cap

- Flexible head provides added drilling tolerance
- Durable plastic material is flexible providing greater holding power
- High performance achieved when used in low density chipboard
- Used with Hi-Lo screws for optimum degrees of strength



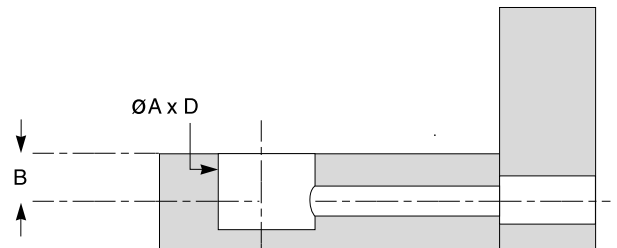
01054
01056



01020



01042



Part No	Description																				
								A	B	D	A1	B1	D1	A2	B2	D2	A3	D3			
01020	Cap 13 (No 2 pozi)	—	P	V	—		—	—	—	—	—	—	—	—	—	—	—	—	—	—	—
01042	Cap 13 (No 3 hex)	—	P	V	—		—	—	—	—	—	—	—	—	—	—	—	—	—	—	—
01054	Barrel Nut headed (5/No11)	—	P	V	—		—	—	—	—	—	—	—	—	—	—	—	—	—	—	—
01056	Barrel Nut headed (4/No8)	—	P	V	—		—	—	—	—	—	—	—	—	—	—	—	—	—	—	—

Z – Zinc

S – Steel

P – Plastic

V – Various

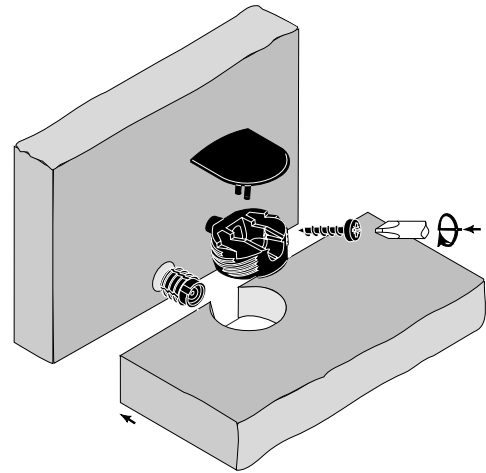
Z,P – Zinc/Plastic

N – Natural

Please note: Due to varying manufacturing tolerances, Titus recommends a trial production run and through product testing of all system hardware before final production runs commence. Titus reserves the right to change technical specifications without prior notice.

Fittings for face-boring applications Concealed fittings

- Combination of hi-thread screw and nylon insert allows a high clamping force improving cabinet rigidity
- Unlimited stacking height due to flush housing
- Provides a strong, secure fitting which eliminates the need for edge boring
- 1mm either side from hole centre is absorbed improving consumer confidence



02046



02985



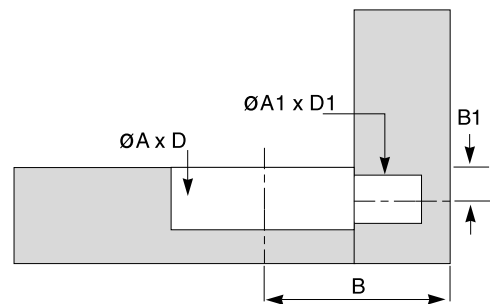
02526



01709



01732



Part No	Description																				
								A	B	D	A1	B1	D1	A2	B2	D2	A3	D3			
01709	Screw panhead (No8x17.6)	Hi	S	Z	-	⊕	-	-	-	-	-	-	-	-	-	-	-	-	-	-	-
01732	Cover Cap	-	P	V	-	-	✓	✓	-	-	-	-	-	-	-	-	-	-	-	-	-
02046	Housing assembly (+01709)	-	P,S	V	-	⊕	✓	-	25	12	11	-	-	-	-	-	-	-	-	-	-
02526	Insert (10x11.5)	-	P	V	-	-	✓	-	-	-	-	10	6	12	-	-	-	-	-	-	-
02985	Housing (no nose)	-	P	V	-	-	✓	-	25	12	11	-	-	-	-	-	-	-	-	-	-

Z – Zinc

S – Steel

P – Plastic

V – Various

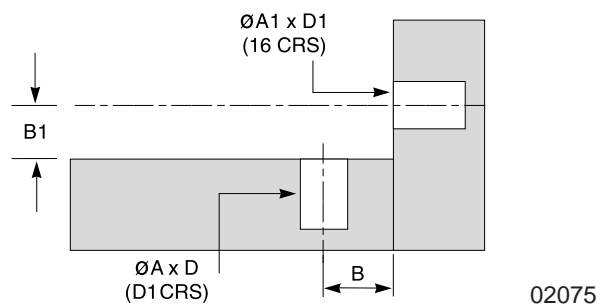
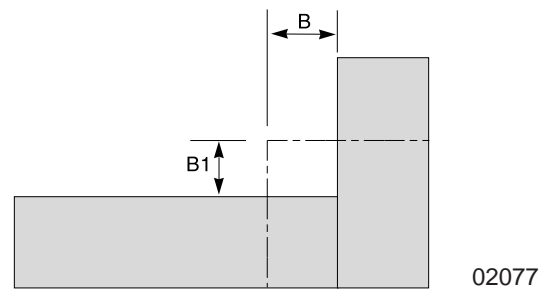
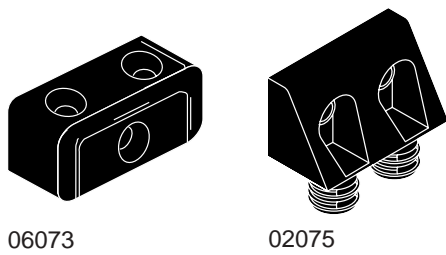
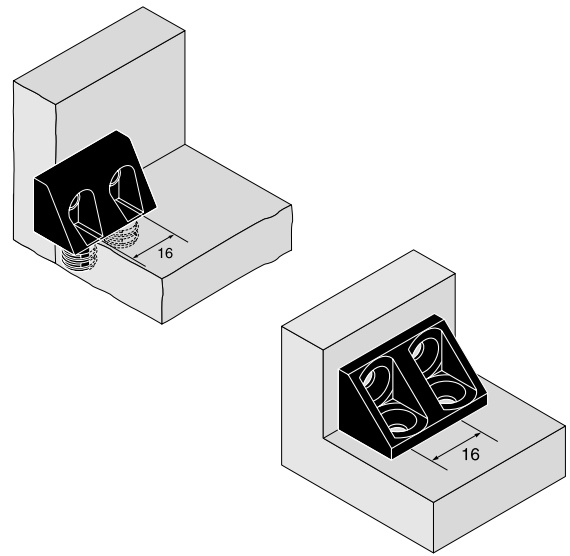
Z,P – Zinc/Plastic

N – Natural

Please note: Due to varying manufacturing tolerances, Titus recommends a trial production run and through product testing of all system hardware before final production runs commence. Titus reserves the right to change technical specifications without prior notice.

Fittings for face-boring applications Concealed fittings

- Range of fixing blocks for multiple applications
- Face drilling only required
- Durable plastic material is flexible providing greater holding power
- Choose screw fastening or hammer insertion



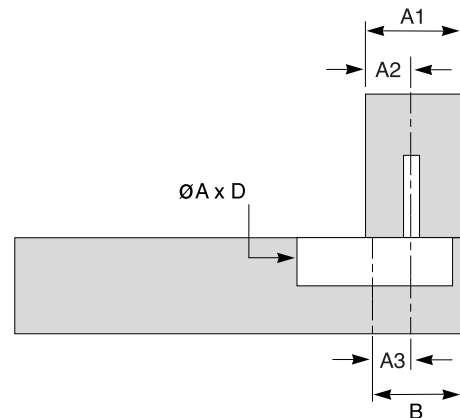
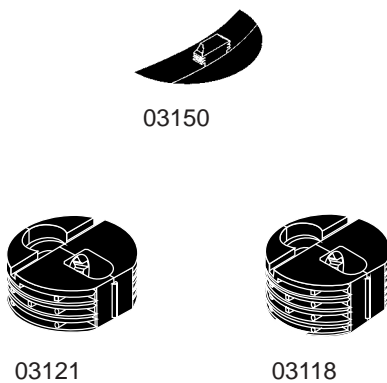
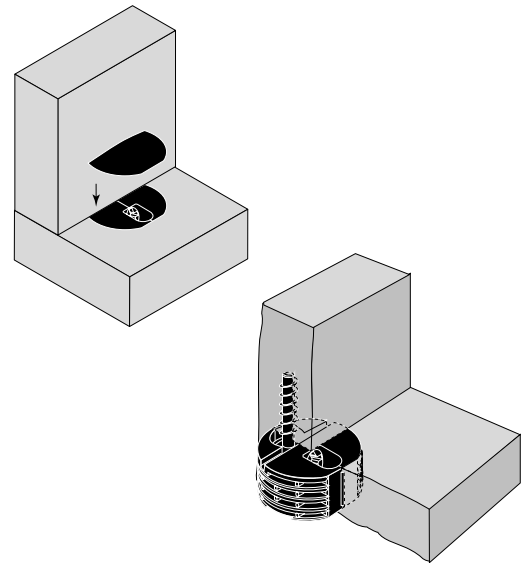
Part No	Description																				
								A	B	D	A1	B1	D1	A2	B2	D2	A3	D3			
01709	Assembly screw No8x17.6	Hi	S	V	—	⊕	—	—	—	—	—	—	—	—	—	—	—	—	—	—	—
02075	Rail fastener	—	P	V	—	—	✓	—	10	10	10.5	10	—	16	—	—	—	—	—	—	—
02077	Rail fastener	—	P	V	✓	—	—	—	—	10	—	—	—	—	—	—	—	—	—	—	—
02526	Insert	—	P	N	—	✓	—	—	—	—	—	10	6	12	—	—	—	—	—	—	—
06073	Modesty block	—	P	V	—	✓	—	—	3	7	—	3	5	—	—	—	—	—	—	—	—

Z – Zinc S – Steel P – Plastic V – Various Z,P – Zinc/Plastic N – Natural

Please note: Due to varying manufacturing tolerances, Titus recommends a trial production run and through product testing of all system hardware before final production runs commence. Titus reserves the right to change technical specifications without prior notice.

Fasteners for face and edge boring Concealed housing/Snapfix™

- One turn locking system reduces assembly time, both in the factory and home
- Pre-assembly feature for consumer convenience
- Decorative cap for excellent concealment
- Shallow version for 12mm panels



Part No	Description							A	B	D	A1	B1	D1	A2	B2	D2	A3	D3
03118	Full depth hsg Assy (0116)	—	P	V	—	—	✓	25	A1-A2+A3	12.5	*	—	—	*	—	—	7	—
03121	Shallow hsg Assy (0114)	—	P	V	—	⊕	✓	25	A1-A2+A3	11	*	—	—	*	—	—	7	—
03150	Half-moon cap	—	P	V	—	⊕	—	—	—	—	—	—	—	—	—	—	—	—

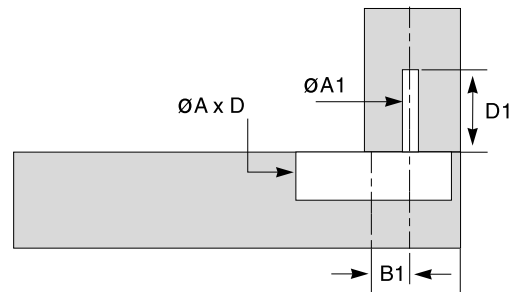
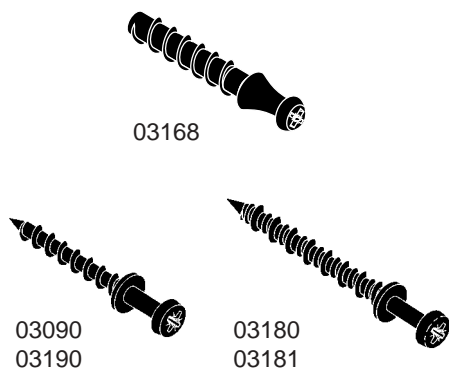
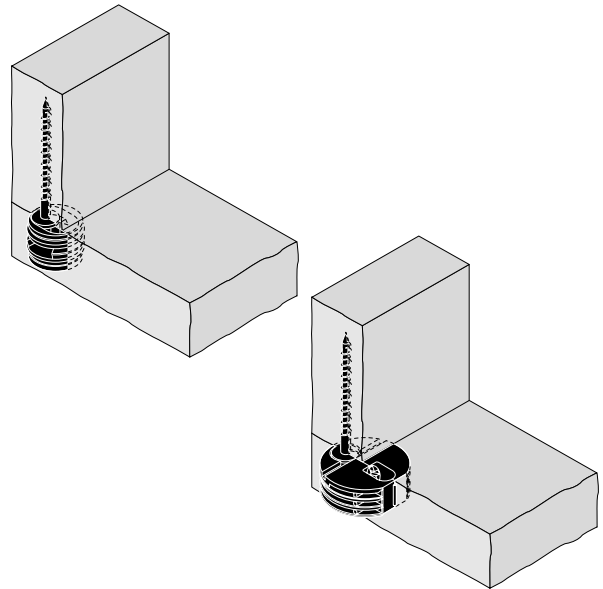
* depends on board thickness




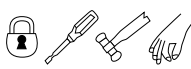
Z – Zinc	S – Steel	P – Plastic	V – Various	Z,P – Zinc/Plastic	N – Natural
----------	-----------	-------------	-------------	--------------------	-------------

Please note: Due to varying manufacturing tolerances, Titus recommends a trial production run and through product testing of all system hardware before final production runs commence. Titus reserves the right to change technical specifications without prior notice.

Fasteners for face and edge boring Dowel

- One turn locking system reduces assembly time, both in the factory and home
- Pre-assembly feature for consumer convenience
- Choice of dowels to suit drilling
- Hi-Lo screw feature for faster insertion



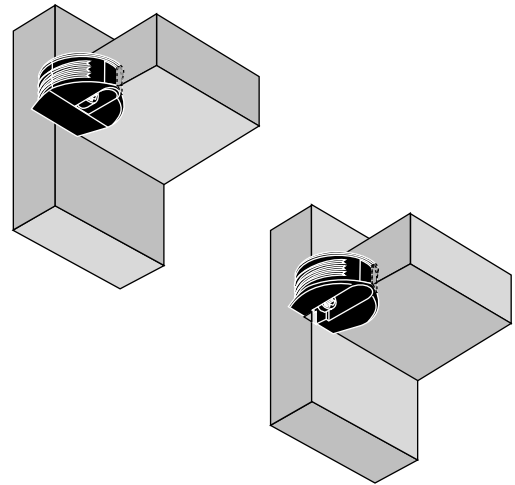
Part No	Description					A	B	D	A1	B1	D1	A2	B2	D2	A3	D3
03090	4x25 Screw dowel (No 8)	Hi	S	V	—	—	—	—	3	7	25	—	—	—	—	—
03168	Screw dowel	Euro	Z	N	—	—	—	—	5	7	30	—	—	—	—	—
03180	Screw dowel (4/No 8)	Hi-Lo	S	Z	—	—	—	—	3	7	9	—	—	—	—	—
03181	Screw dowel (5/No 11)	Hi-Lo	S	V	—	—	—	—	3.75	7	30	—	—	—	—	—
03190	Screw dowel (4/No 8)	Hi	S	V	—	—	—	—	3	7	9	—	—	—	—	—

Z – Zinc S – Steel P – Plastic V – Various Z,P – Zinc/Plastic N – Natural

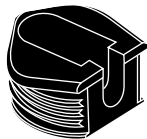
Please note: Due to varying manufacturing tolerances, Titus recommends a trial production run and through product testing of all system hardware before final production runs commence. Titus reserves the right to change technical specifications without prior notice.

Fittings for face-boring only Flushbloc™/Flushfix™

- One piece connector range
- The Angledriv screw provides high levels of tolerance, increasing consumer confidence
- Face drilling only required
- Corner joint and shelf fixing options



02190*
02164
02193*



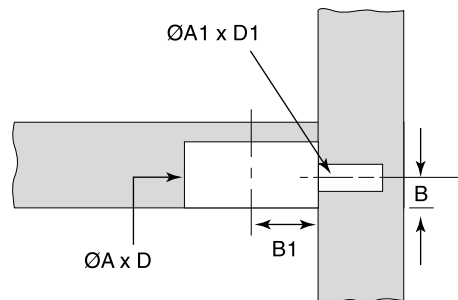
02161



00021
00022



02172
02182



* Not available in USA / Canada

Part No	Description																				
								A	B	D	A1	B1	D1	A2	B2	D2	A3	D3			
00021	Angledriv screw t/start(unthumped)	Euro	Z	N	-	⊕	-	-	-	4.5	-	5	-	13	-	-	-	-	-	-	-
00022	Angledriv screw t/start(thumped)	Euro	Z	N	-	⊕	-	-	-	4.5	-	5	-	13	-	-	-	-	-	-	-
02161	Flushfix 25x10.5	Euro	P	V	-	-	✓	-	25	4.5	11	-	12	-	-	-	-	-	-	-	-
02164	Flushbloc assembled (+00022)	Euro	Z,P	V	-	⊕	✓	-	25	4.5	11	5	12	13	-	-	-	-	-	-	-
02172	Insert single-start	Euro	P	N	-	-	✓	-	-	4.5	-	10	13	13	-	-	-	-	-	-	-
02182	Insert twin-start	Euro	P	N	-	-	✓	-	-	4.5	-	10	-	13	-	-	-	-	-	-	-
02190	Flushbloc	Euro	P	V	-	⊕	✓	-	25	4.5	11	-	12	-	-	-	-	-	-	-	-
02193	Flushbloc assy + ret(00022)	Euro	Z,P	V	-	⊕	✓	-	25	4.5	11	5	-	13	-	-	-	-	-	-	-

Z – Zinc

S – Steel

P – Plastic

V – Various

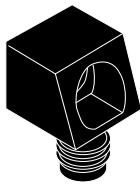
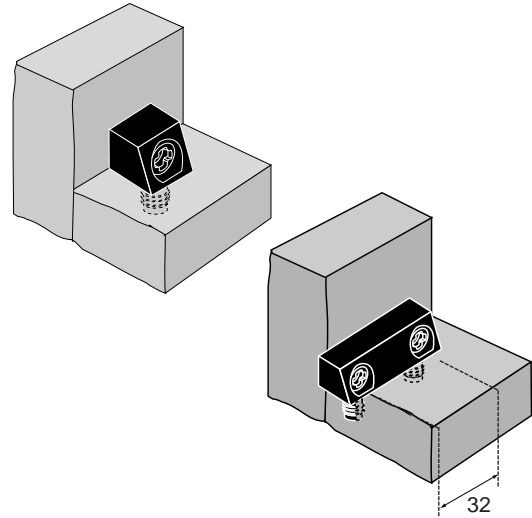
Z,P – Zinc/Plastic

N – Natural

Please note: Due to varying manufacturing tolerances, Titus recommends a trial production run and through product testing of all system hardware before final production runs commence. Titus reserves the right to change technical specifications without prior notice.

Fittings for face-boring only Minibloc™/Twinbloc™

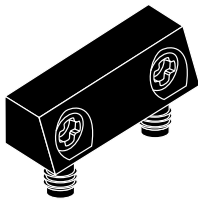
- One piece connector range
- Face drilling only required
- Easy to use, foolproof home insertion
- Angledriv screw tolerates good levels of inaccurate drilling increasing consumer confidence



02101*
02107*



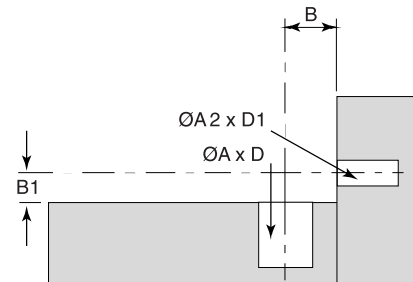
02120
02121
02141
02153
02144



02139
02130



00021
00022



* Not available in UK / Europe

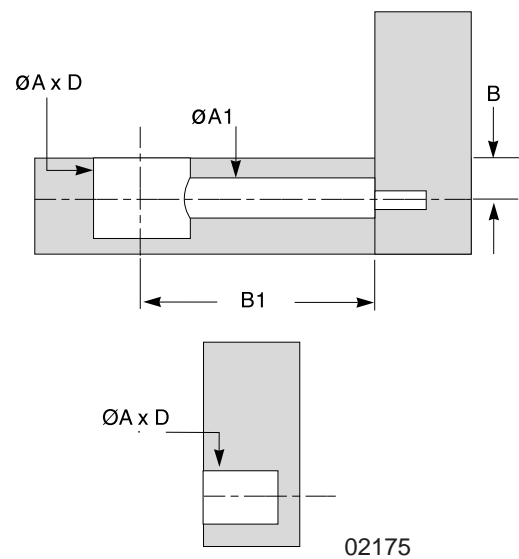
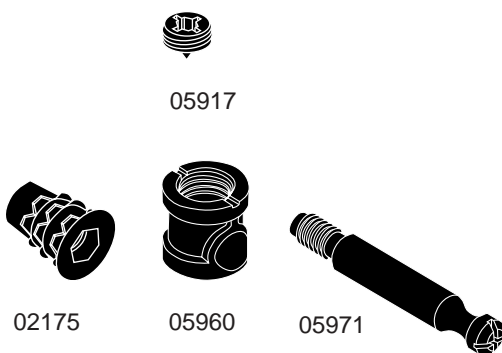
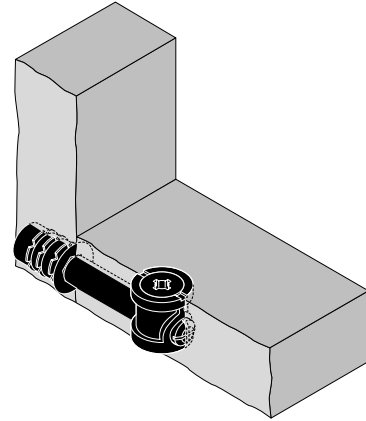
Part No	Description																			
								A	B	D	A1	B1	D1	A2	B2	D2	A3	D3		
00022	Angledriv screw t/start (thumped)	Euro	Z	N	—	⊕	—	—	—	—	—	—	13	5	—	—	—	—	—	—
00021	Angledriv screw t/start	Euro	Z	N	—	⊕	—	—	—	—	—	13	5	—	—	—	—	—	—	—
02101	Minibloc (10x9.5)	—	P	V	—	—	✓	—	10	11	9.5	—	6	—	5	—	—	—	—	—
02107	Minibloc	—	P	V	—	—	✓	—	10	11	10.5	—	6	—	5	—	—	—	—	—
02120	Minibloc assembly	Euro	Z,P	V	—	—	✓	—	10	11	11	—	6	10.5	5	—	—	—	—	—
02121	Minibloc assembly	Euro	Z,P	V	—	⊕	✓	—	10	11	9.5	—	6	10.5	5	—	—	—	—	—
02130	Twinbloc 32CRS	—	P	V	—	⊕	✓	—	10	11	11	—	6	—	—	—	—	—	—	—
02139	Twinbloc assy	Euro	Z,P	V	—	⊕	✓	—	10	11	11	—	6	10.5	5	—	—	—	—	—
02141	Minibloc	Euro	P	V	—	—	✓	—	8	11	9.5	—	6	—	—	—	—	—	—	—
02144	Minibloc assembly	Euro	Z,P	V	—	⊕	✓	—	8	11	9.5	—	6	13	5	—	—	—	—	—

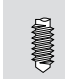





Z – Zinc S – Steel P – Plastic V – Various Z,P – Zinc/Plastic N – Natural

Please note: Due to varying manufacturing tolerances, Titus recommends a trial production run and through product testing of all system hardware before final production runs commence. Titus reserves the right to change technical specifications without prior notice.

High strength connectors Contract fix™ system

- High performance fastener
- Thread design gives repeatability
- Multi-drive recess
- Higher than average pull up



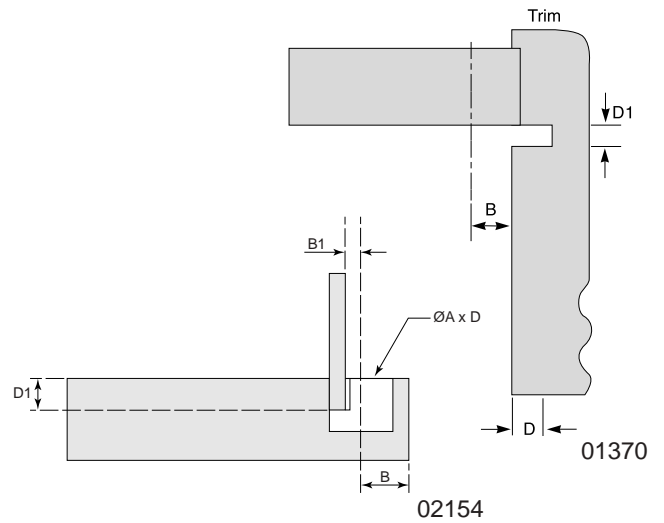
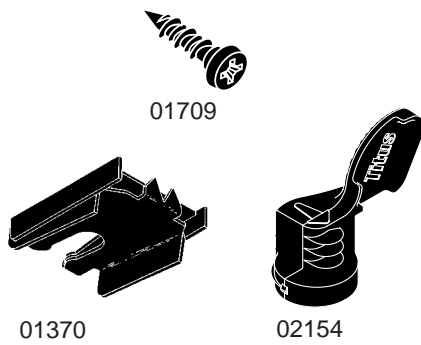
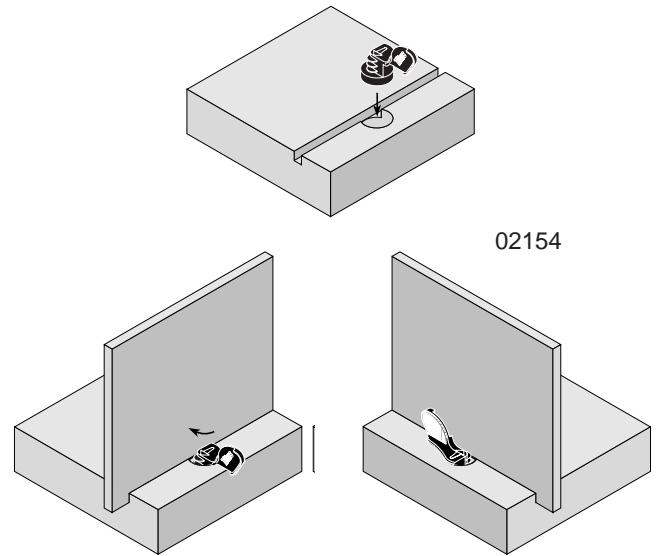
Part No	Description							A	B	D	A1	B1	D1	A2	B2	D2	A3	D3
05917	Housing+multi g/screw	M10	Z	N	-	⊕	✓	15	7.5/9	12.5/14	-	-	-	-	-	-	-	-
05960	Housing Cylinder 15x12	-	Z	N	-	-	✓	15	7.5/9	12.5/14	-	-	-	-	-	-	-	-
05971	Dowel 7x34	M6x9.5	V	Z	-	⊕	-	-	-	-	7.8	34	-	-	-	-	-	-
02175	Insert Ø9x13 (6 hex)	M6	Z	V	-	⊕	-	9	-	13.5	-	-	-	-	-	-	-	-

Z – Zinc	S – Steel	P – Plastic	V – Various	Z,P – Zinc/Plastic	N – Natural
----------	-----------	-------------	-------------	--------------------	-------------

Please note: Due to varying manufacturing tolerances, Titus recommends a trial production run and through product testing of all system hardware before final production runs commence. Titus reserves the right to change technical specifications without prior notice.

General fasteners No-tools Backfix and Trimfix™

- Push-in insertion into panel
- No tools required to lock the backfix panels together
- The handle on backfix acts as a stop during locking, providing greater accuracy and speed of insertion
- Barbs on the backfix provide a quality fastener for rigid cabinet construction



Part No	Description	Material				Locking			Dimensions										
									A	B	D	A1	B1	D1	A2	B2	D2	A3	D3
01370	Trimfix	-	V	V	-	✓	-	✓	-	10	5	-	-	4/4.4	-	-	-	-	-
01709	Screw No 8x17.6 Pan	Hi	S	V	-	⊕	-	-	-	-	-	-	13	-	-	-	-	-	-
02154	Hardboard backfix	-	Z	N	-	-	-	✓	12	9MIN	10	-	3/3.5	6	-	-	-	-	-

Z – Zinc

S – Steel

P – Plastic

V – Various

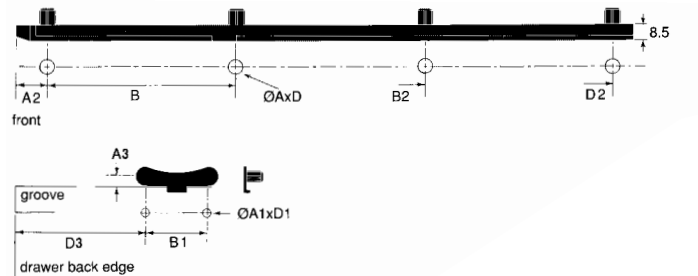
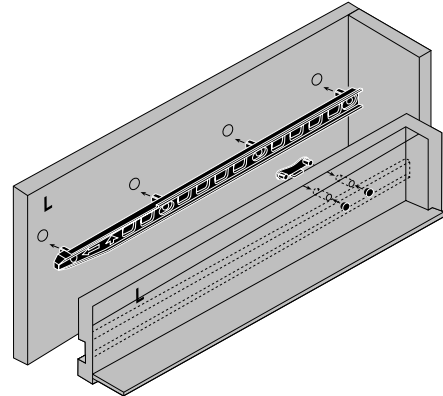
Z,P – Zinc/Plastic

N – Natural

Please note: Due to varying manufacturing tolerances, Titus recommends a trial production run and through product testing of all system hardware before final production runs commence. Titus reserves the right to change technical specifications without prior notice.

Drawer solutions 17mm drawer slide

- Runners are paired in one piece moulding
- The guide rail steers the drawer and reduces jamming risk
- Integral drawer stop and hole plugs
- Manufactured in HDPE to provide a smooth glide action



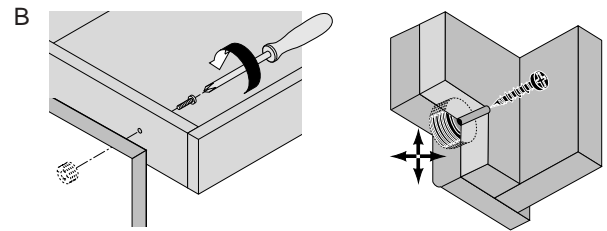
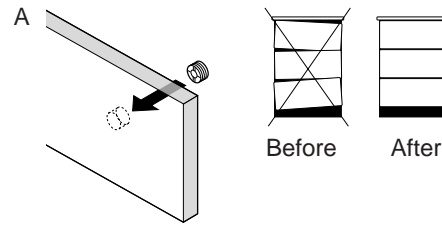
Part No	Description	Material & Finish							Dimensions (mm)										
		Spring	M	Stop	Lock	Tools	Z	S	P	V	A	B	D	A1	B1	D1	A2	B2	D2
05179	17mm slide pair 192 (Europe)	—	P	V	—	—	✓	✓	8	96	9	5	32	9	16	192	288	6	80
05184	17mm slide pair 288 (Europe)	—	P	V	—	—	✓	✓	8	96	9	5	32	9	16	192	288	6	80
05201	17mm slide pair 288 (USA)	—	P	V	—	—	✓	✓	8	96	9	5	32	9	16	192	288	6	80

Z – Zinc S – Steel P – Plastic V – Various Z,P – Zinc/Plastic N – Natural

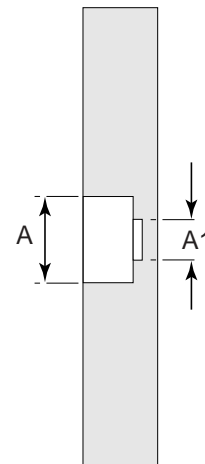
Please note: Due to varying manufacturing tolerances, Titus recommends a trial production run and through product testing of all system hardware before final production runs commence. Titus reserves the right to change technical specifications without prior notice.








Drawer solutions Drawer front adjuster (DFA)

- Multi-direction adjustment
- Locking screw to fasten
- Independent of drawer system
- One piece housing



06308
06309
06310



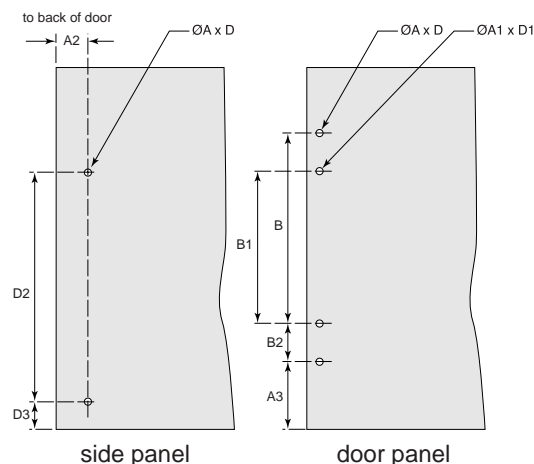
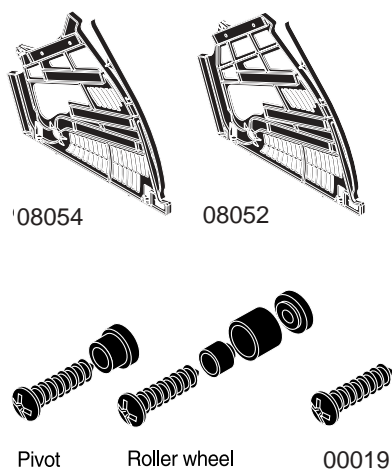
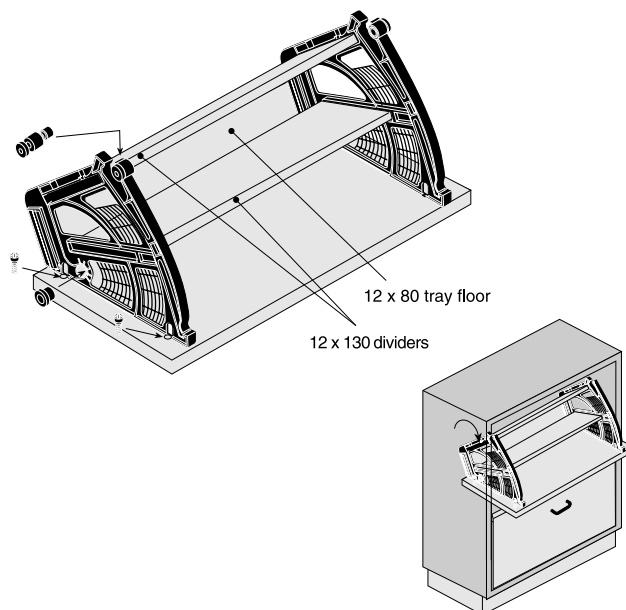
Part No	Description								A	B	D	A1	B1	D1	A2	B2	D2	A3	D3
06308	DFA Housing	3.5 (no6)	P	V	—	—	✓	—	19	—	—	9	—	—	—	—	—	—	—
06309	DFA Housing	UNC8-32	Z,P	V	—	—	✓	—	19	—	—	9	—	—	—	—	—	—	—
06310	DFA Housing	M4	Z,P	V	—	—	✓	—	19	—	—	9	—	—	—	—	—	—	—

Z – Zinc S – Steel P – Plastic V – Various Z,P – Zinc/Plastic N – Natural

Please note: Due to varying manufacturing tolerances, Titus recommends a trial production run and through product testing of all system hardware before final production runs commence. Titus reserves the right to change technical specifications without prior notice.

Wardrobe/Closet solutions Soft-open Shoe Rack

- Smooth open-close mechanism
- Wheel runners provide a simple and smooth operation
- Teeth provide a ratchet action slowing down the opening and closing
- Webbing design feature protects children from trapping fingers

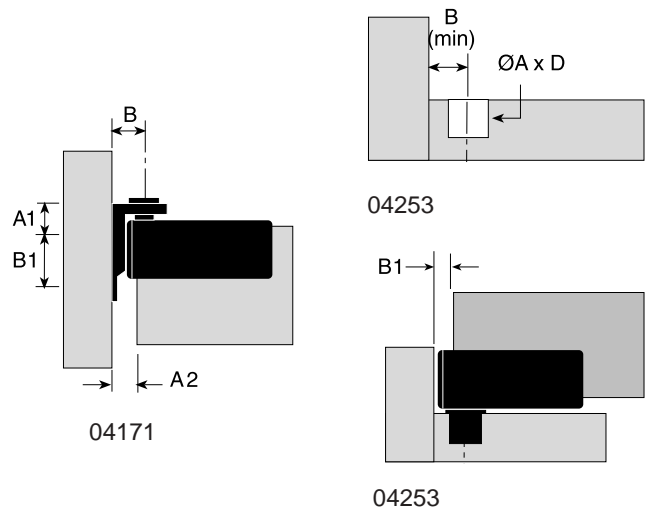
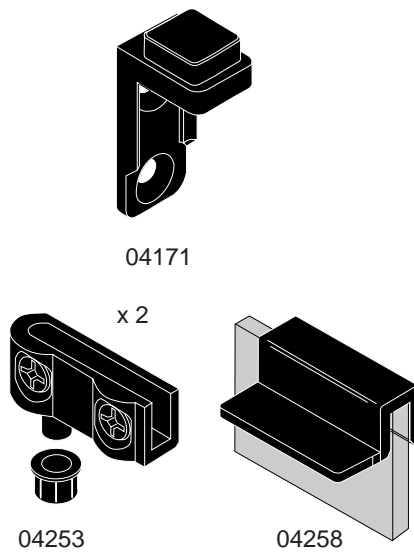
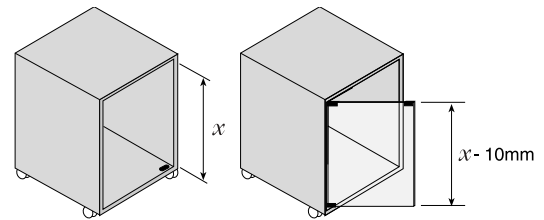
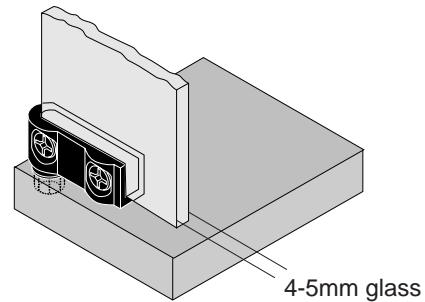


Part No	Description											
		A	B	D	A1	B1	D1	A2	B2	D2	A3	D3
00016	Euro-screw 6x16 (4 reqd)	Euro	V	Z	—	⊕	—	—	—	—	—	—
08052	Shoe-rack	—	P	V	—	✓	—	✓	—	—	—	
08054	Shoe-rack	—	P	V	—	✓	—	✓	—	—	—	
Z – Zinc		S – Steel		P – Plastic		V – Various		Z,P – Zinc/Plastic		N – Natural		

Please note: Due to varying manufacturing tolerances, Titus recommends a trial production run and through product testing of all system hardware before final production runs commence. Titus reserves the right to change technical specifications without prior notice.

Hinge solutions Glass door hinge

- Hinge, grub screws and mountings are supplied as a kit
- One piece moulding
- The closed end on the hinge provides a fool proof location of hinge to edge of glass
- All plastic design is safer in contact with glass



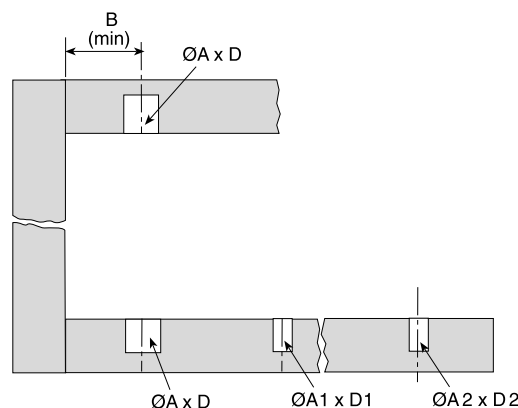
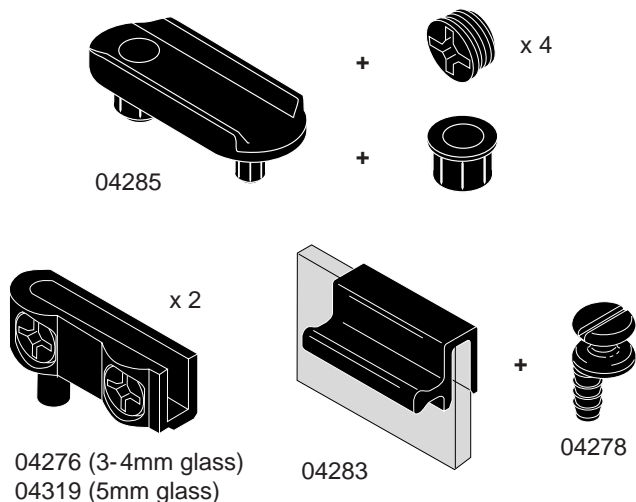
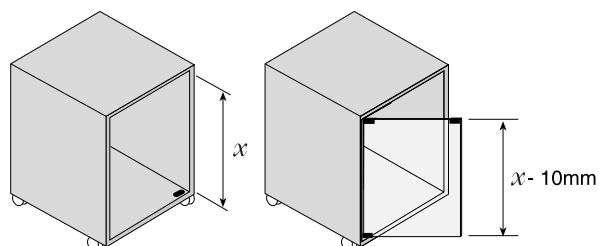
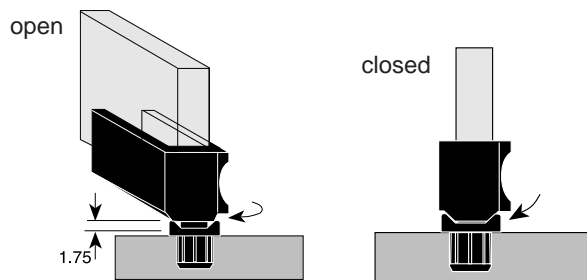
Part No	Description	Material				Tools			Dimensions										
		Spring	M	Paint	Lock	Screw	Wrench	Hand	A	B	D	A1	B1	D1	A2	B2	D2	A3	D3
04009	Hinge adhesive pad (2 reqd)	-	P	N	-	-	✓	-	-	-	-	-	-	-	-	-	-	-	-
04171	Pivot bracket	-	P	V	-	✓	-	✓	-	-	-	-	-	-	-	-	-	-	-
04253	Hinge Assembly set-closed (2)	-	P	V	-	⊕	-	✓	9	8.5	7	-	10	-	-	-	-	-	-
04258	Handle+plate for magnetic catch	-	P	V	-	-	-	✓	-	-	-	-	-	-	-	-	-	-	-
04266	Kit (04253,) 04009, 04258	-	P	V	-	-	-	✓	9	8.5	7	-	-	-	-	-	-	-	-

Z – Zinc S – Steel P – Plastic V – Various Z,P – Zinc/Plastic N – Natural

Please note: Due to varying manufacturing tolerances, Titus recommends a trial production run and through product testing of all system hardware before final production runs commence. Titus reserves the right to change technical specifications without prior notice.

Hinge solutions Hold-shut glass door hinge

- Hold feature keeps door in closed position
- The grub screws have flange to prevent over-screwing resulting in an accurate fit every time
- No requirement for an adhesive pad
- Kit of parts is ordered as a single part number



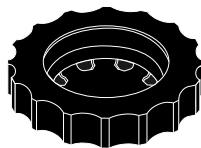
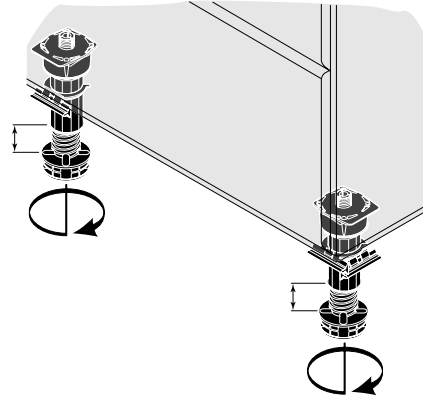
Part No	Description	Material			Tools			Dimensions											
		Spring	Bagged	Paint	Lock	Screw	Wrench	A	B	D	A1	B1	D1	A2	B2	D2	A3	D3	
04276	Hold-shut GDH set (3-4mm)	-	P	V	-	✓	-	✓	9	-	9	-	-	-	-	-	-	-	-
04278	Adjustable door stop	-	P	V	-	✓	-	✓	-	-	-	-	5	-	10.5	-	-	-	-
04283	Handle & door stop set	-	P	V	-	✓	-	-	-	-	5	-	10.5	-	-	-	-	-	-
04285	Hold-shut GDH accessory set	-	P	V	-	✓	-	✓	9	-	-	-	-	-	-	-	-	-	-
04287	Pad for handle (3-4mm)	-	P	V	-	-	-	✓	-	-	-	-	-	-	-	-	-	-	-
04319	Hold-shut GDH set (5mm)	-	P	V	-	✓	-	✓	9	-	10.5	-	-	-	-	-	-	-	-
04452	Bagged set for 3-4mm glass	-	P	V	-	✓	-	✓	-	-	see above	-	-	-	-	-	-	-	-
04460	Bagged set for 5mm glass	-	P	V	-	✓	-	✓	-	-	see above	-	-	-	-	-	-	-	-

Z – Zinc S – Steel P – Plastic V – Various Z,P – Zinc/Plastic N – Natural

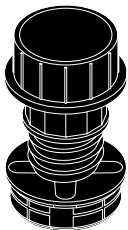
Please note: Due to varying manufacturing tolerances, Titus recommends a trial production run and through product testing of all system hardware before final production runs commence. Titus reserves the right to change technical specifications without prior notice.

Adjustable cabinet leg range Adjustable leg, extension and foot

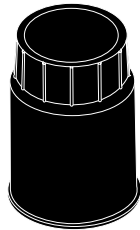
- Legs are supplied assembled at a pre-set height
- Wide adjustment range to fit all common plinth heights
- Jacking point adjustment feature
- Simple push on design to sockets



02569



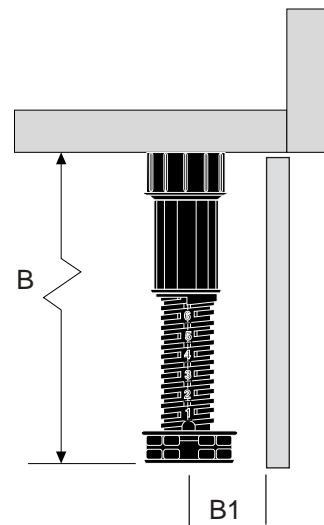
02570
02653



02571



02549
02666



Part No	Description																				
								A	B	D	A1	B1	D1	A2	B2	D2	A3	D3			
02549	Adjustable leg	—	P	V	—	—	—	✓	—	92-157	—	—	24	—	—	—	—	—	—	—	—
02569	Fixed foot	—	P	V	—	—	—	✓	—	—	—	—	38.5	—	—	—	—	—	—	—	—
02570	Adjustable leg	—	P	V	—	—	—	✓	—	60-90	—	—	24	—	—	—	—	—	—	—	—
02571	Leg extension	—	P	V	—	—	—	✓	—	50	—	—	24	—	—	—	—	—	—	—	—
02653	Adjustable leg	—	P	V	—	—	—	✓	—	110-180	—	—	24	—	—	—	—	—	—	—	—
02666	Adjustable leg	—	P	V	—	—	—	✓	—	92.5-150	—	—	24	—	—	—	—	—	—	—	—

Z – Zinc

S – Steel

P – Plastic

V – Various

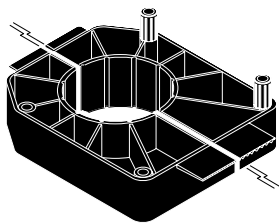
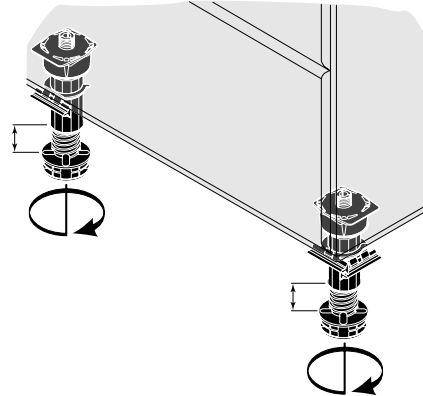
Z,P – Zinc/Plastic

N – Natural

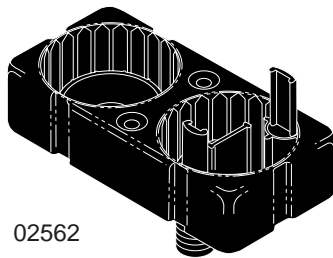
Please note: Due to varying manufacturing tolerances, Titus recommends a trial production run and through product testing of all system hardware before final production runs commence. Titus reserves the right to change technical specifications without prior notice.

Adjustable cabinet leg range Leg top fixes

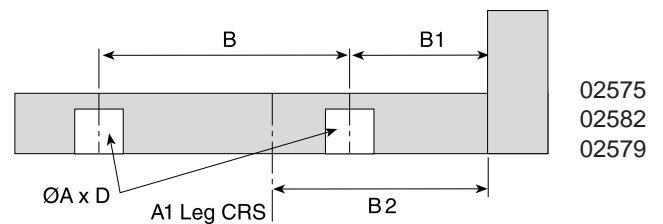
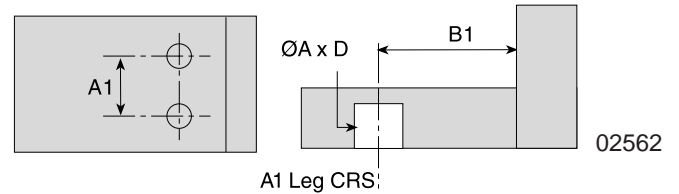
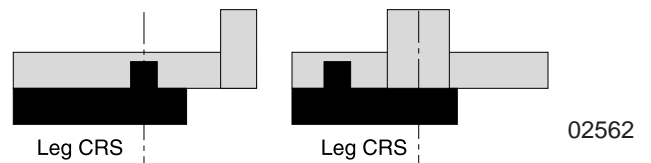
- Choice of dowel or screw on sockets
- Shared leg cabinet socket provides additional support when used in shared mounting applications
- Extra support clip feature
- Invert second clip for corner plinth fixing









02575
02582
02579



02562



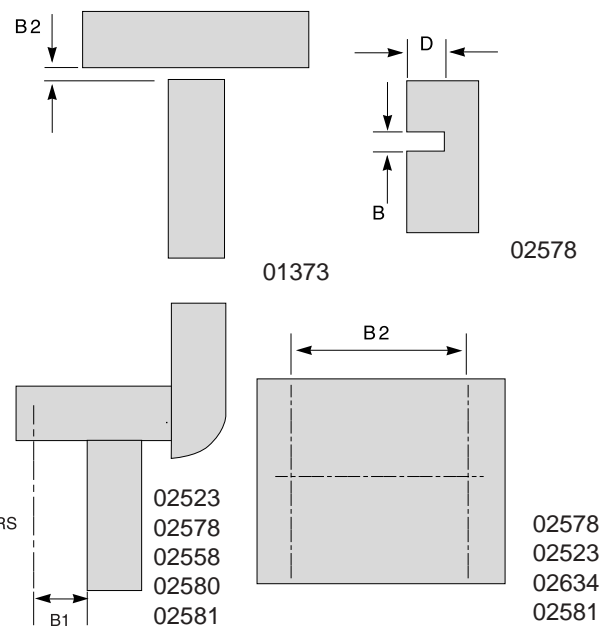
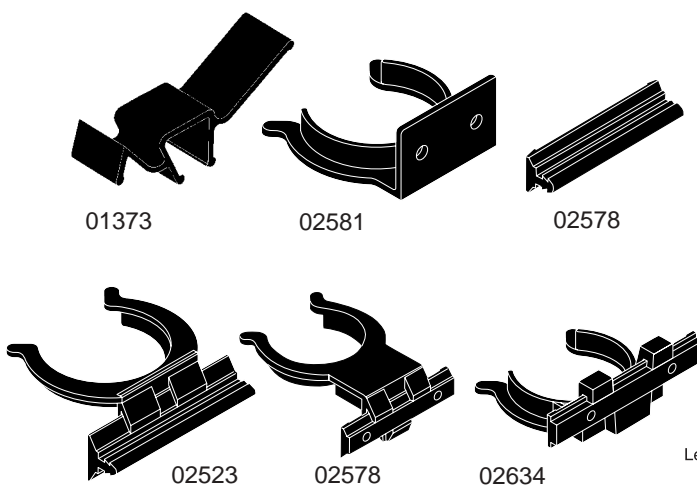
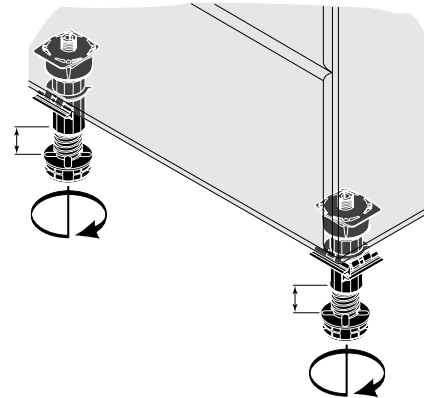
Part No	Description							A	B	D	A1	B1	D1	A2	B2	D2	A3	D3
02562	Shared leg cabinet fix	—	P	V	—	⊕	✓	12	—	12.5	32	34	—	—	—	—	—	—
02575	Bloc 38 (4xscrew)	—	P	V	—	⊕	—	3	64x64	6	32	21	—	—	38.5	—	—	—
02579	Bloc 38 (4xscrew)+lip	—	P	V	—	—	—	3	64x65	6	32	21	—	—	38.5	—	—	—
02582	Bloc 38 (4xdowel)+lip	—	P	V	—	—	✓	10	64x66	12.5	32	21	—	—	38.5	—	—	—

Z – Zinc S – Steel P – Plastic V – Various Z,P – Zinc/Plastic N – Natural

Please note: Due to varying manufacturing tolerances, Titus recommends a trial production run and through product testing of all system hardware before final production runs commence. Titus reserves the right to change technical specifications without prior notice.

Adjustable cabinet leg range Plinth clips and fox clip

- Groove design eliminates the need for drilling and fits into any position on plinth
- The screw in version can sit in variable plinth positions
- The self adhesive version does not require any machine work, but plinth can be fitted onsite for customisation
- The reversible fitting to leg provides alignment when taking plinth around the corner



Part No	Description																		
									A	B	D	A1	B1	D1	A2	B2	D2	A3	D3
01373	Plinth fix	—	P	N	—	—	—	✓	—	—	—	—	—	—	4	—	—	—	
02523	Plinth clip 24 - screw/knock-on	—	P	V	—	✓	✓	—	—	4	7	—	24	—	—	32	—	—	—
02578	Plinth clip 38 - screw/knock-on	—	P	V	—	✓	✓	—	—	4	7	—	38.5	—	—	32	—	—	—
02581	Stick-on plinth clip	—	P	V	—	✓	—	✓	—	—	—	—	24	—	—	21	—	—	—
02634	Plinth clip 24 - screw on	—	P	V	—	✓	—	—	—	—	—	—	24	—	—	32	—	—	—

Z – Zinc

S – Steel

P – Plastic

V – Various

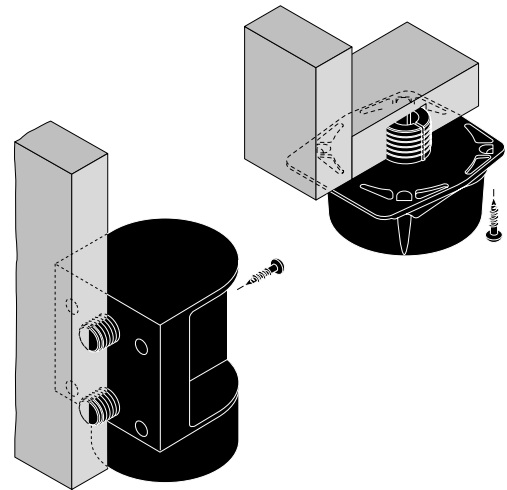
Z,P – Zinc/Plastic

N – Natural

Please note: Due to varying manufacturing tolerances, Titus recommends a trial production run and through product testing of all system hardware before final production runs commence. Titus reserves the right to change technical specifications without prior notice.

Adjustable cabinet leg range Leg top fixes

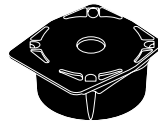
- Lip provides additional support to end panel and gives extra strength
- Cam and socket have different diameter fixed holes eliminating the possibility of incorrect assembly
- The side fix has twin dowel mounting for positive location
- Rivet fix design gives quick fastening of socket



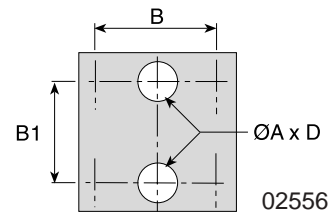
02560



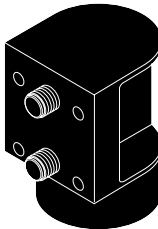
02558



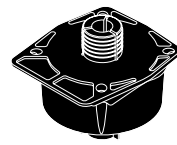
02559



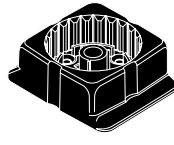
02556



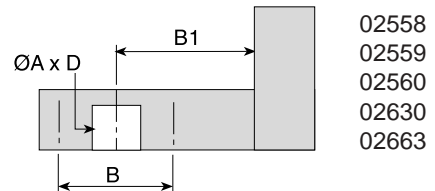
02556 (no dowels)



02630



02663



02558
02559
02560
02630
02663

Part No	Description																				
								A	B	D	A1	B1	D1	A2	B2	D2	A3	D3			
01709	Screw No8x17.6 Pan	Hi	S	Z	-	⊕	-	-	-	-	-	-	-	-	-	-	-	-	-	-	-
02556	Side fix	-	P	V	-	✓	✓	-	10	32	11	-	32	-	-	-	-	-	-	-	-
02558	Socket fix (dowel)	-	P	V	-	⊕	✓	-	10	34x34	12.5	-	24	-	-	-	-	-	-	-	-
02559	Socket fix (screw)	-	P	V	-	✓	-	-	-	34x34	-	-	24	-	-	-	-	-	-	-	-
02560	Rivet fix/skid	-	P	V	-	✓	✓	-	15	34x34	12.5	-	24	-	-	-	-	-	-	-	-
02630	Rivet fix (heavy-duty)	-	P	V	-	✓	✓	-	15	34x34	12.5	-	24	-	-	-	-	-	-	-	-
02663	Rivet fix/skid	-	P	V	-	✓	✓	-	15	32	12.5	-	32	-	-	-	-	-	-	-	-

Z – Zinc

S – Steel

P – Plastic

V – Various

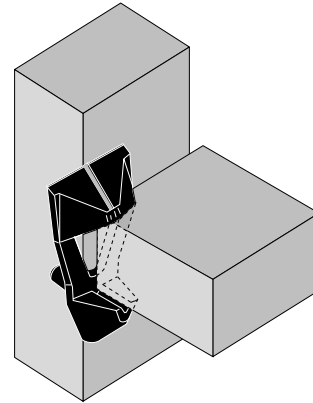
Z,P – Zinc/Plastic

N – Natural

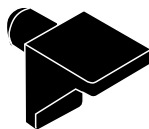
Please note: Due to varying manufacturing tolerances, Titus recommends a trial production run and through product testing of all system hardware before final production runs commence. Titus reserves the right to change technical specifications without prior notice.

Shelf solutions Shelf support/retainer

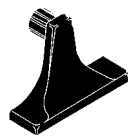
- Hold down feature traps the shelf in place for security
- Folding design allows the shelf to be post mounted in an assembled cabinet
- To suit a wide range of shelf thickness
- Pad for metal shelf support when using glass



01826 01832
01828 01837
01829 01843



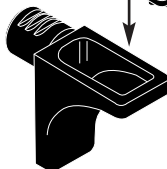
00500



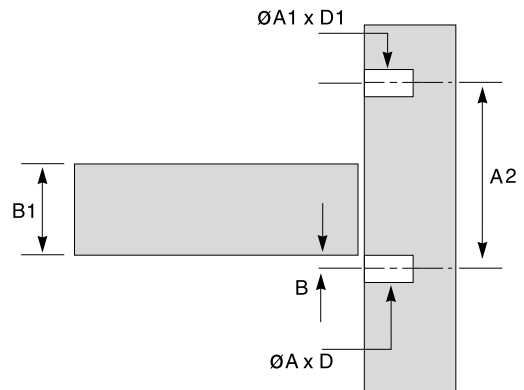
01822



01818



01825
01820



Part No	Description																		
								A	B	D	A1	B1	D1	A2	B2	D2	A3	D3	
01820	Shelf support	—	P	V	—	—	—	✓	5	1.5	8.5	—	—	—	32	—	—	—	—
01822	Shelf holddown	—	P	V	—	—	—	✓	5	1.5	8	—	19	—	32	—	—	—	—
01825	Shelf support	—	Z	N	—	—	—	✓	5	1.5	8.5	—	—	—	32	—	—	—	—
01826	Shelf support ret (12mm board)	—	P	V	—	—	—	✓	5	1.5	6	—	12.7	—	32	—	—	—	—
01828	Shelf support ret (16mm board)	—	P	V	—	—	—	✓	5	1.5	6	—	16	—	32	—	—	—	—
01829	Shelf support ret (19mm board)	—	P	V	—	—	—	✓	5	1.5	6	—	19	—	32	—	—	—	—
01837	Shelf support ret (15mm board)	—	P	V	—	—	—	✓	5	1.5	8	—	15	—	32	—	—	—	—
01838	Shelf support ret (16mm board)	—	P	V	—	—	—	✓	5	1.5	8	—	16	—	32	—	—	—	—
01843	Shelf support ret (19mm board)	—	P	V	—	—	—	✓	5	1.5	8	—	19	—	32	—	—	—	—

Z – Zinc

S – Steel

P – Plastic

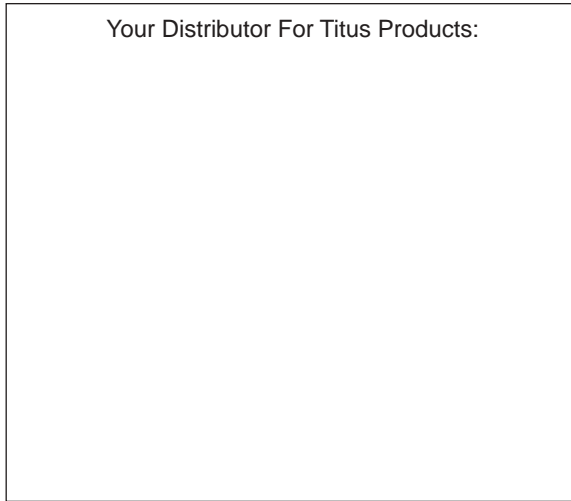
V – Various

Z,P – Zinc/Plastic

N – Natural

Please note: Due to varying manufacturing tolerances, Titus recommends a trial production run and through product testing of all system hardware before final production runs commence. Titus reserves the right to change technical specifications without prior notice.

Your Distributor For Titus Products:



Titus[®]

Fittings for purpose

Titus International Plc
Ridgeway Industrial Estate
Iver, Buckinghamshire
SLO 9HW
United Kingdom

Tel +44 (0)1753 778278
Fax +44 (0)1753 778225
Website www.titusint.com
E-mail info@titusint.com

UK
Titus Tool Company Ltd.
Ridgeway Industrial Estate
Iver, Buckinghamshire
SLO 9HW
United Kingdom
Tel +44 (0)1753 654680
Fax +44 (0)1753 655254

SCANDINAVIA
Titus Tool Company Ltd.
Verkstadsgatan 1B
S-39239, Kalmar
Sweden
Tel +46 (0)480 12800
Fax +46 (0)480 59050

THE AMERICAS
Titus Tool Co. Inc.
22020 72nd Avenue South
Kent, WA 98032
USA
Tel: 800 762 1616 toll free
Tel +1 253 872 2829
Fax +1 253 872 2827

CENTRAL EUROPE
Titus-Beschläge GmbH &
Co.KG
Sundernkamp 19
D-32130 Enger
Germany
Tel +49 (0)5224 976-100
Fax +49 (0)5224 976-350

ASIA/PACIFIC
Titus Tool Co. Pte. Ltd.
39 Changi South Avenue 2
Singapore 486352
Tel +(0)65 6383 3922
Fax +(0)65 6383 3178

POLAND
Titus Polska Sp.z o.o.
ul.Powstańców Wielkopolskich 110
PL-62-002 Suchy Las/ Poznań
Poland
Tel +48 (0)61 811-56-84
Fax +48 (0)61 811-54-02

CZECH REPUBLIC
Ceský Titus s.r.o.
Statek 1
CZ-338 21 Osek u Rokycan
Tschechien / Czech Republic
Tel +420 (0)371 72 55 75
Fax +420 (0)181 72 73 41